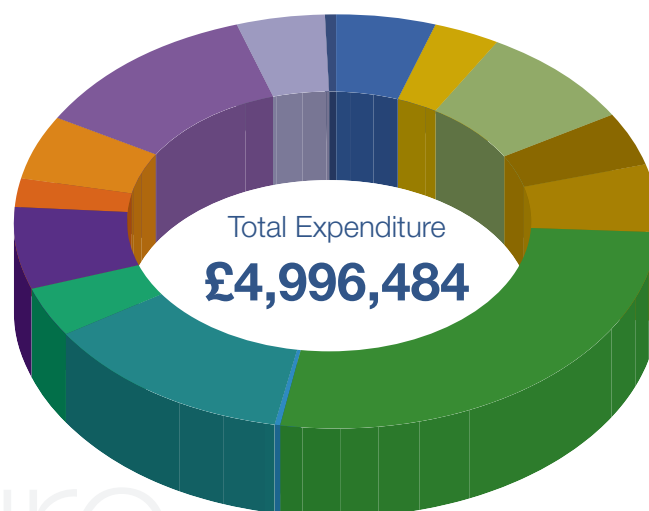
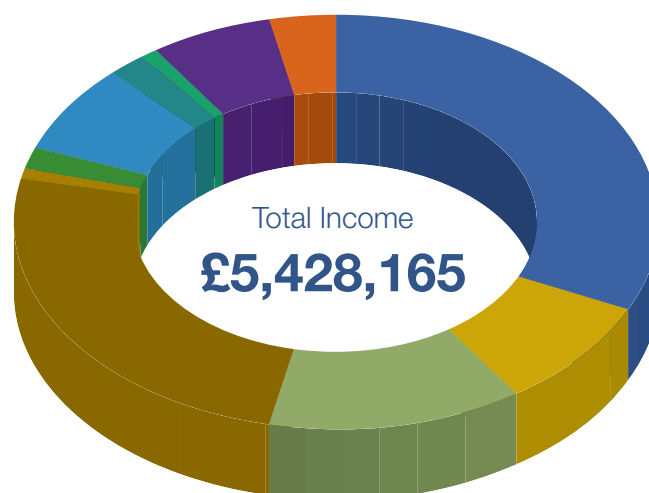


ANNUAL REPORT 2017 - 2018

Premises Costs	Repairs and Maintenance	£232,852
	Utilities and Insurance	£153,271
	Rents and Rates	£366,296
	Internal Maintenance	£191,197
	Grounds Maintenance	£242,400
Employee Costs	Salaries, Pensions and Training	£1,645,431
Transport Costs	Vehicles and Allowances	£24,033
Supplies & Services	Equipment and Supplies	£576,256
	IT and Communications	£176,084
	Office Sundries	£303,859
	Grants Given to Others	£103,123
	Loan Repayments	£231,555
External Providers	Contractors	£525,512
	Consultants	£209,115
	Councillor Allowances	£15,500



General Income	Precept - Income from Council Tax	£1,740,096
	Grants Recieved	£457,601
	Developer Fees	£695,052
Income from Activities	Crematorium and Cemeteries	£1,361,041
	Retail Sales	£40,207
	Events and Exhibitions	£92,772
	Markets and Fairs	£374,374
	Other Income	£114,492
Land and Property	Allotments and Other Grounds	£43,509
	Land and Property Rental	£335,882
	Parking Fees	£173,138



Salisbury City Council Your A to Z

Allotments, Bemerton Heath Centre, Camping & Caravan Site, Cemeteries, Charter Fair, Christmas Lights, Committees, Community Development, Community Orchards, Competitions, Crematorium, Events, Floral Displays, Friary Community Centre, Garages for rent, Gilbert the Dragon, Grazing Land, Guildhall, Information Centre, Markets, Mayor of Salisbury, Memorial Trees & Benches, Monuments, Music in the Park, Parks & Open Spaces, Properties, Shopmobility, Sports Coaches, Sports Pitches, St. George's Day, Street Cleaning, Teenage Market, Toilets, Twinning

What the Council did...

SALISBURY CITY COUNCIL CONSIDERED 102 PLANNING APPLICATIONS

SALISBURY REMEMBERS

A Community Project, engaging all ages creating and donating over 10000 poppies to decorate the Guildhall to commemorate the Remembrance weekend

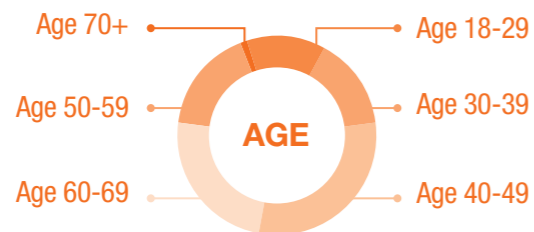


19 Partners from the voluntary and community sector benefited from free use of our community centres at Bemerton Heath and The Friary, these include:

**SCOUTS • TRIPLE P FAMILY LEARNING
POLICE CADETS • YOUNG CARERS
SPURGEONS • ACTIVE PLUS**



EMPLOYEES AT THE COUNCIL



OVER 300 HANGING BASKETS SET OUT AROUND THE CITY



WE INVESTED IN THE FOLLOWING TRAINING:

- Health & Safety
- GDPR
- Safeguarding
- Strategic business planning
- Social Media
- Job evaluation
- Learning and development planning
- Leadership and management



**778 HOT MEALS
SERVED AT OUR
LUNCH CLUBS**

11

We worked with 11 partners to deliver free workshops to the community, these included:

**Wiltshire Council, Salisbury Museum,
ABC Cook & Salisbury Playhouse**



3 TEENAGE MARKETS

**49 TRADERS OVER
THE 3 MARKETS**

10 HOURS OF PERFORMERS

**102
CHARTER
MARKETS
HELD**



TOTAL COMMUNITY
GRANTS AWARDED
FOR THE YEAR

£13,487

OF WHICH THERE WAS
4 AWARDS OF
**£3000 PER YEAR
FOR 3 YEARS**



**50 NEW TREES
PLANTED**



1 GROUNDS
APPRENTICESHIP
SUCCESSFULLY
COMPLETED AND
NOW RECRUITED
AS A GROUNDS
OPERATIVE

THE MAYOR ATTENDED
82 EVENTS



**65 HARDSTANDINGS CONSTRUCTED AT
THE HUDSON'S FIELD CAMPSITE TO
EXTEND THE OPENING PERIOD**

SIGNIFICANT
INVESTMENT
IN GROUNDS
MAINTENANCE
EQUIPMENT



**182 CHILDREN
ATTENDED CAMP ACTIVE**

£90K
AWARDED TO
LOCAL CULTURAL
ORGANISATIONS

83
COMPLAINTS
RECEIVED AND
ANSWERED

INSTALLED NEW
LITTER BINS

85
CHARITY
STALL PITCHES
BOOKED AT OUR
MARKETS

70
EVENTS AND
SPECIALIST
MARKETS
HELD

**37 DOORSTEP
SPORTS SESSIONS
SUPPORTED BY
SPORTS COACHES**



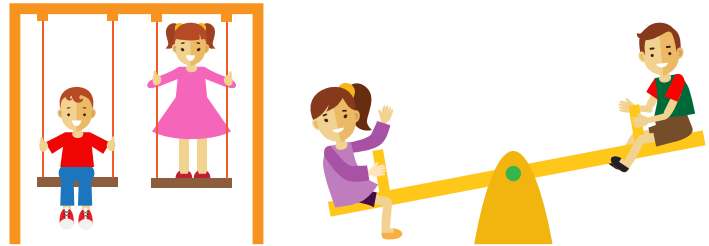
In the Guildhall we hosted

-  **19 Craft Fairs**
-  **7 Exhibitions**
-  **11 Conferences**
-  **7 Weddings**
-  **20 Parties**
-  **2 Funerals**
-  **42 Council Meetings**
-  **43 Events**
-  **2 Concerts**



During the Easter Holidays we organised a FREE Youth Festival delivering a wide range of activities including sport, music and art. This festival culminated in a live music event where young people performed alongside the headline act Kate Nash at the Arts Centre

COMPLETE REFURBISHMENT OF TWO PLAY AREAS
COOKS CLOSE AND GAINSBOROUGH CLOSE



NEW ITEMS OF PLAY EQUIPMENT INSTALLED IN
ESSEX SQUARE AND GREYFRIERS CLOSE



21 OUT OF 23
COUNCILLORS
CLAIMED
COUNCILLOR
ALLOWANCES

Wiltshire Community Foundation engaged us to deliver the 5 year **Stronger Families Project** on the Friary




25
FREEDOM OF
INFORMATION
ENQUIRIES

**GET INVOLVED IN OUR
COUNCIL MEETINGS!**

You are welcome to attend our Council Meetings. For Agendas, minutes and more please visit our website www.salisburycitycouncil.gov.uk



salisburycitycouncil



salisburycc



@SalisburyCC



salisburycc



salisburyCC

Contact Salisbury City Council

 **The Guildhall, Salisbury, Wiltshire SP1 1JH**

 **01722 342860**

 **info@salisburycitycouncil.gov.uk**

 **www.salisburycitycouncil.gov.uk**

**SALISBURY
CITY COUNCIL**

