

# SALISBURY CITY COUNCIL



Environmental Services Team – July 2022

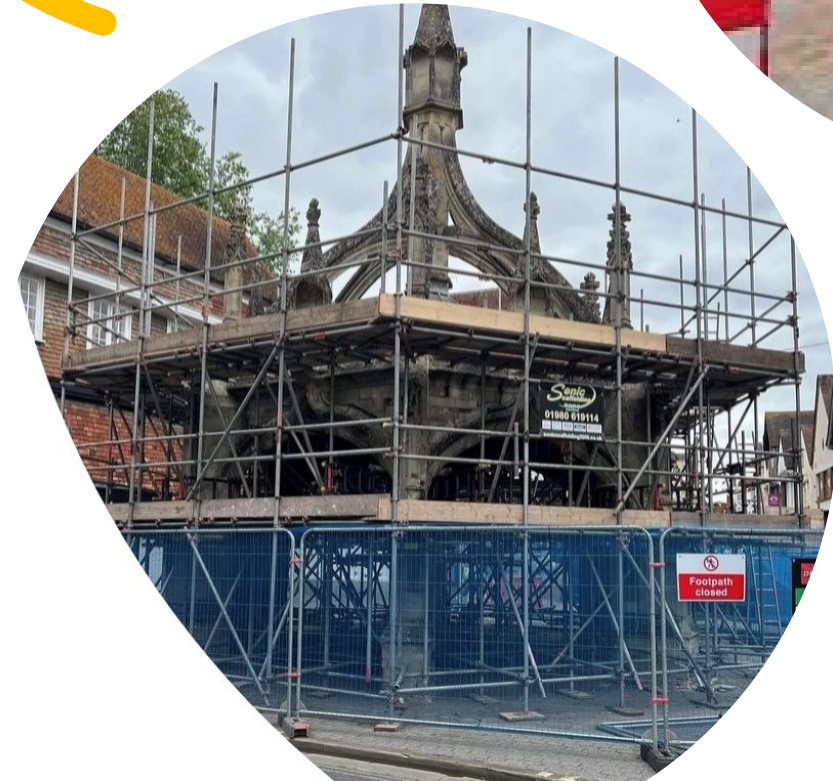
# Environmental Services Streetscene

- Some fifty or so road verges in Wiltshire are designated as protected road verges because of the importance of their fauna, flora or geological features and are subject to special management. Two have recently been identified in Salisbury – London Road, opposite BMW Garage (botanical value) and Stratford Sub Castle (Wild Clary)
- 18 new recycling bins to be installed in August as Salisbury City Council moves to recycling more of the waste it collects.
- Shrubs, grass and weeds are currently the Streetscene teams biggest challenge.
- All requests for grass cuts to accommodate Jubilee parties achieved.
- A lot of work going on behind the scenes to prepare for the idverde contract coming in house on 1<sup>st</sup> December 2022.



# Environmental Services Facilities

- On 21<sup>st</sup> May the Poultry Cross was damaged and made structurally unsafe. We now have scaffolding in place to ensure structural integrity and are working with our contractor, Historic England and our insurance provider to restore.
- Maintenance work for the Guildhall is underway, so you may notice some scaffolding over the coming weeks.
- Coach Station/Victoria Park/Fisherton Rec Toilets – We have experienced a spate of arson/damage
- Victoria Park Tennis Pavilion - Tree roots are impacting the side of the tennis courts and we have asked Bawdens Tree Specialists to have the area surveyed in the first instance before we decide a route forward
- Cow Lane Allotments - An unusually large water bill was received and led to us having to turn the mains water supply off in order that further investigations can take place. A water bowser for allotment holders has been delivered to site as a temporary measure during this process.



# Environmental Services CCTV

- So far in 2022, the hours worked are up on the previous 3 years, **1,906** hours have been worked in total from the start of January until the end of May, **70** hours up on 2021, **375** hours up on 2020 and **441** hours more than the same period in 2019. An average of **381** hours a month.
- In the first 5 months of 2022 we have received **162** Requests to view footage and have seized **119** of those, a percentage of **73%** taken for evidence. In comparison to previous years we are up on **132/86** in 2021, **127/89** in 2020 and **126/73** in 2019 over the same 5-month period.
- Recruitment of volunteers is progressing, with a new training course planned for September.
- We have replaced two cameras this month, which gives an indication of life expectancy (about 5 years).
- We have had some good feedback from the police/courts:
  - Man who mounted kerb and collided with pedestrians given 8 years custodial. CCTV played an integral role in providing evidence for this.
  - Suspected drug dealer on cycle was noticed by CCTV operator, police were informed and this will likely result in a 3 year custodial sentence.



# Environmental Services Crematorium & Cemeteries

- The cremation figures for April/May total 242 compared to 228 in 2021.
- 'Funeral Partners' who are made up of Chris White, F.Curtis and L.C. Hill have decided to use Westleigh Crematoria for Receptions (Direct Cremations) as they have lowered their price. Some consideration will need to be given to this potential loss of income.
- The entrance drive to the crematorium (where it joins Barrington Road) has recently been re-tarmaced.
- The Avenue Cemetery continues to receive very positive feedback. The Crematorium Manager pays weekly visits to the site to keep on top of any issues concerning past burials and items left on graves.



# Environmental Services Parks

- The cities floral display was installed earlier than usual this year this to coincide with the Queens Jubilee. The display is made up of red, white and blue flowers and includes: 365x hanging baskets, 1x Gilbert the Dragon, 13x barrier planters, 17x tier tower planters, 4x cup and bowl planters. Bedding plants have also been planted in some of the tubs and gardens throughout the city centre.
- We have used peat reduced compost (which is heavier than normal compost) for all the tubs and planters this year except for the hanging baskets and this was due to weight constraints.
- Queens Green Canopy – The plaques have now been installed at Victoria Park and Hudson Field marking the Beech trees. The majority of the trees are establishing well. However, there are a few which aren't yet producing new growth. The buds have swollen on the trees which is a good sign and we believe that they are just late coming out. We will continue to monitor throughout the year.
- The Grounds team are doing an excellent job with the summer grounds maintenance and are on target and have recently completed the grass cutting in London Road and Devizes Road Cemeteries.

