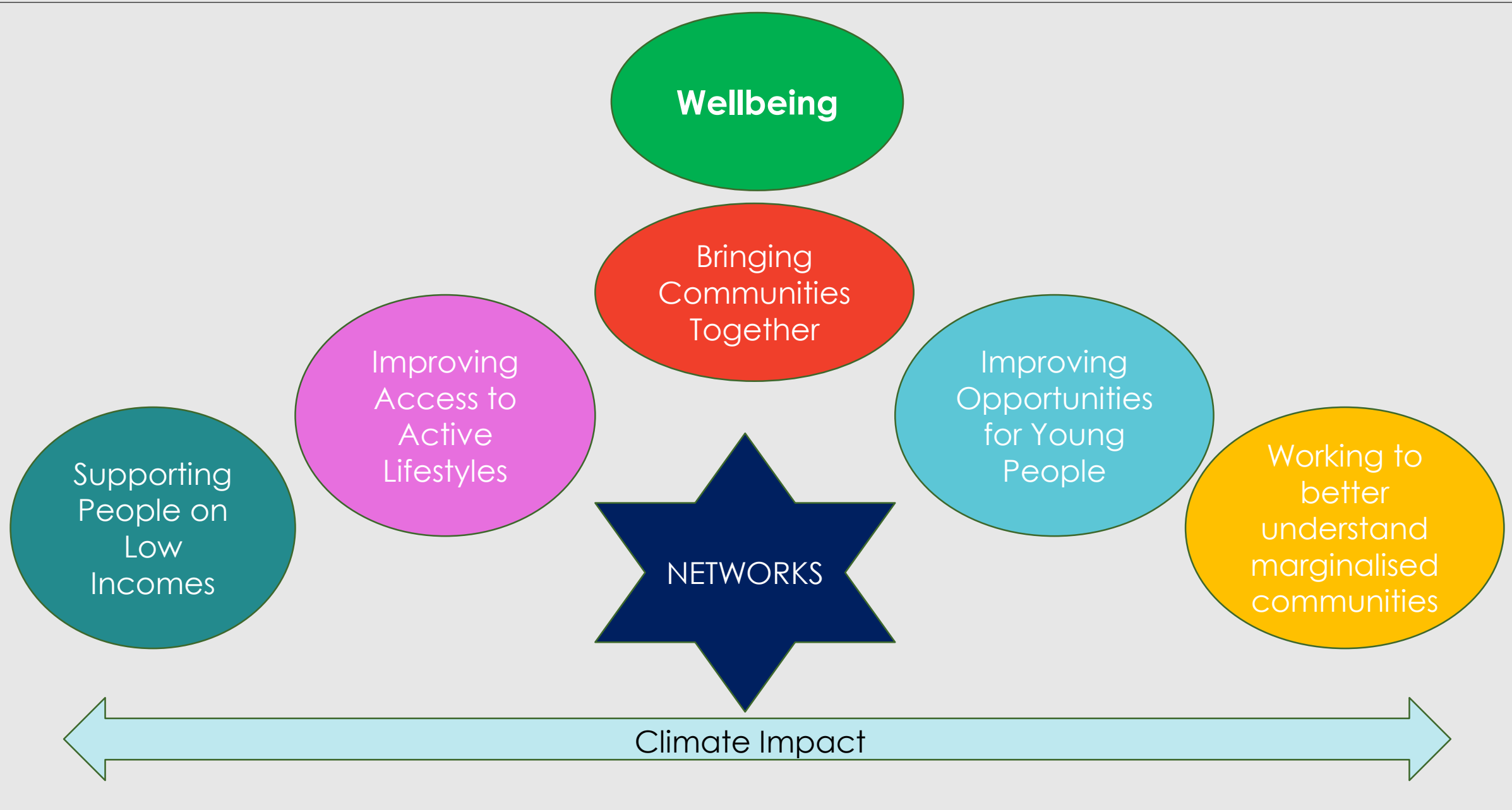


COMMUNITIES TEAM

Update – April – Sept 2022



Bringing Communities Together

Bemerton Heath Funday – 400 residents

Harnham Funday (In partnership)- 180
engagements

Bishopdown – 500 residents

Friary Summer Festival - 200

Bemerton Beach Part (Support) – 120
engagements

Salisbury Pride (Support) – 130 engagements

*New community partners offering free provision
and information to residents*

- AFVBC – Armed Forces Veteran breakfast Club
- Tumble Tots
- St Mark's and St Andrews & the CrossBar Café
- Harnham Community Network
- DIGs – Disability Interest group for Salisbury
- Share Salisbury



Supporting People on Low Incomes

Salisbury Pantry –

- Since opening the Pantry has supported **1791** residents including **745** children within households
- Shops per week (average)
 - Q4 2021 – 45
 - Q1 2022 – 50
 - Q2 2022– 73 (136 new members)
 - Sept 2022 – over 85 per week
- 8 new food donation sources
- Q2 – over £700 in direct donation

Other

- Working with Rent Reductions organisations on their access plans including bursary provision
- Free access to summer holiday events and activities at Bemerton, The Friary and 3 x Funday events
- Free school holiday – food and fun sessions
- Free bike repair for children



Improving Access to Active Lifestyles

- **2691 instances of engagement**
- **4251 hours of engagement delivered**
- Sports Roadshows – 73 participants
- Bike Event – 26 children's bikes services
- Summer Cricket at Harnham – 45 participants
- Senior Games – 18 participants
- Senior Sports Brochure – 18 sports and 16 groups
- Training for walking for Health Volunteers
- Project leadership on PanDisability Football and Salisbury Tigers Pan Disability Team Partnership development supporting around 25 people with Disabilities.
- St John's Place sports sessions
- Ukrainian Hub youth sports Provision – 2 days



Working to
better
understand
marginalised
communities

DIGs

- An asset-based approach to supporting the energy and knowledge of people with disabilities to make change and influence decisions and actions in Salisbury
- 4 meetings – space provided
- Linking the group into e.g. accessibility conversations around river park

Pride 2022 – Conversations

- Working from conversations with around 200 young people parents and professionals to establish as steering group for development of youth and family LGBTQ

Read Easy

- Space provided for training of read easy volunteers
- Open community space used for reading 1 to 1's
- Signposting to opportunities and services for first read easy client



Improving Opportunities for Young People

Youth Provision Forum – See Networks

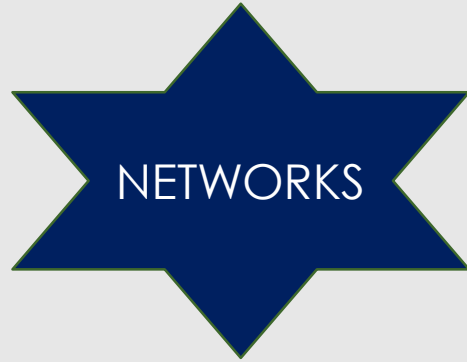
Friary Hangout

- 27 registered members (up from 19 in Q1)
- 5 members on the planning group
- 10 members received Youth Advocacy Training from Communities First
- 1 member trading at Teenage Market
- 1 member participating in a youth spoken word project with Wiltshire Creative
- 3 members on the Youth Forum Panel

Upmarket Bus Shelter – Bemerton

- Volunteer led
- 16 members





Youth Provision Forum

- Youth Panel in place – 11 members
 - Exploring plans to collaborate with the WCC Youth Jobs Fair in March 2023 to curate a sub-event on 'standing out from the crowd' in job searches – CV writing, volunteering & work experience
 - Youth Provision Section of Experience Salisbury in development
- Sports Forum

Foodie Network

- Collaborative flyer highlighting low cost and free food projects in the city

Community Café

- 38 regular attendees (102 individuals)
- 9 regular organisations
- Building informal social networks and connecting voluntary sector with residents

Asset Based Approaches.....

Participatory Public Art - the approach behind the brief development

- Harnessing the skills and expertise of a local socially engaged artist
- Listening to the passions, energy and lived experience of local people through creativity
- Working to identify themes and ideas to inform policy approaches to public art expenditure

Community Engagement

- 9 community events led by partners supported by the Communities Team this summer
- Focus Question – What do you want to do or change?
- Estimated 494 new engagements
- 9 new volunteers

Youth Panel – Youth Forum

- Harnessing the knowledge and networks of 11 young people to inform decisions
- Assessing Area Board Youth Grant Applications
- Starting a plan for allocation of SCC Youth budget
 - Collaboration with WCC Youth Jobs fair
 - Youth Bursary process review – Oct – Dec 2022

Grants – April – Sept 2022

Grants Awarded

- Pantry Partnership - £1500
- Transition City - £2000
- Silver Salisbury - £3000/year for 3 years
- **Grants Pending**
- Read Easy - £637
- Riverside Tennis Club - £2000

Medium Grants Live in 2022

- Family Counselling Trust - £3000
- Care Home Volunteers - £3000
- Well City- £3000
- Underground Studios CIC - £3000
- City Gate Church – Salisbury Soup - £1500

Potential Grants Remainder - £1081



Salisbury City Community Lottery

- Good Causes Revenue projection - **£23,114**
- Including **£2834** to our central fund
- Total operator revenue projection - **£7456**
- Salisbury Pantry Good Cause income (actual) - **£3400.80**
- **1114** individual supporters

