

SALISBURY CITY COUNCIL

Report

Subject : Commercial Bins – Market Square & Queen Street
Committee : Environment & Climate Committee
Date : 3 July 2023
Author : Marc Read, Environmental Services Manager

1. Report Summary:

1.1. This report provides information in relation to Wiltshire Council's (WC) request to Salisbury City Council (SCC), to re-create a commercial bin storage area on the Market Square, near Market Square toilets and on Queen Street, next to the Guildhall.

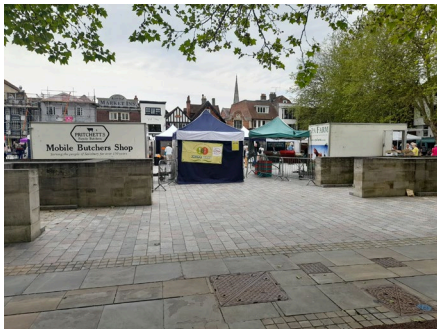
2. Background:

- 2.1. There is an ongoing challenge with the storage of commercial bins in some areas of Salisbury city centre. The City Council has considered has been interested in this issue both post and prior to the Asset Transfer of 2017.
- 2.2. The City Council has asked WC to delegate responsibility for the presentation of commercial waste in the city to SCC, but this has not been taken forward by WC.
- 2.3. SCC, WC and Salisbury BID have been discussing options for specific problem areas in the centre of Salisbury.
- 2.4. Until recently, all businesses who could not store their waste within their premises, were allowed by WC to place commercial bins directly on the highway, outside of their premises with little consultation. In some areas, this has caused complaints from neighbouring businesses such as those on Butcher Row & Fish Row.
- 2.5. WC have had a policy of education rather than enforcement when it came to dealing with businesses who did not maintain their bins in a suitable manner. For example, keeping bin lids closed, not storing waste outside of bins etc. SCC's Streetscene Team have consistently informed WC about issues regarding businesses' presentation of commercial waste. However, the decision to educate rather than enforce has not had the desired positive impact in all cases.
- 2.6. In May 2023, WC, contacted some city centre businesses to remind them that those who can store their waste on their property, that they should do so with immediate effect.
- 2.7. Those properties without private storage, were advised that they would need to contact WC to state their position, so a storage area can be arranged. If the storage requirement is due to businesses simply wishing less frequent collections, this would not be regarded as a justifiable reason for highway storage.

- 2.8. The storage areas designated for bins storage by WC at present include New Canal (both ends), and at the rear of the Guildhall. At these locations individual bins stores will be provided for each bin to be stored in. These storages will be the responsibility of the business.
- 2.9. WC has also asked SCC to consider allowing bins storage on its land and this is considered in para 3 below.
- 2.10. WC has no statutory duty to allow storage and collection of waste on the highway and as the Highway Authority the approval of arrangement with storing/collecting waste on adopted land lies with WC.

3. Wiltshire Council Request for Market Square & Queen Street:

- 3.1. WC have requested that SCC give consideration to create communal commercial bin storage points on City Council land at two locations; the Market Square near the toilets and on Queen Street next to The Guildhall. This is to assist specifically in removing commercial bins from Butcher Row & Fish Row.



4. Considerations:

- 4.1. In the recent past, commercial bin communal storage areas have led to problems, for example, litter collecting around the storage/bin, bags of waste being dumped, lids of bins not be secured and so on. Therefore, a return to these types of commercial stores away from the business premise generating the waste will need careful management. WC have not detailed specifically what careful management means in relation to their actions.
- 4.2. Properties that look onto the bin storage areas, such as the new Bradbeers Department Store to be opened on Blue Boar Row, may have concerns about waste storage in this area.
- 4.3. WC will not place restrictions on specific businesses in this area of Salisbury or in Salisbury as a whole, as any restriction would need to be placed across the whole of Wiltshire.
- 4.4. SCC officers have strong reservations about communal storage facilities. Any misuse and/or spillages will be responsibility of SCC to rectify/clean/remove fly tipping etc. There would be an as yet unknown cost associated with this.

- 4.5. SCC's insurers have indicated that further discussion would need to be had, to remain insured, if a bin storage unit was built under the windows of the Guildhall because of the increased chance of burglary and arson.
- 4.6. To date, WC have not taken any enforcement action on any business with a commercial bin outside of their property to SCC's knowledge, and no amendment to their policy on education rather than enforcement has been made. SCC has no enforcement powers in relation to commercial waste.

5. Recommendations:

It is recommended that the Committee:

- 5.1. Consider the information provided and determine if the locations requested by WC Queen Street, Guildhall & Market Square, near toilets, could be offered as communal commercial bin storage areas.

6. Wards Affected: St Edmund's

7. Background Papers: Nil

8. Implications:

- 8.1. **Financial:** To be determined
- 8.2. **Personnel:** Nil in relation to this report
- 8.3. **Environmental Impact:** To be determined
- 8.4. **Equalities Impact Statement:** Nil in relation to this report