



## 8: Appendices for Policies and Explanatory Text

Above  
Guildhall Square

# Appendix 1: Environmental base data maps

**366 Figure 38** illustrates the significant ridgelines and high ground together with the confluence of river valleys. The rivers are part of the Hampshire Avon system which flows into Christchurch harbour.

**367** Much of the low-lying valley bottoms are subject to flooding as shown in **Figure 39** where the Environment Agency Flood Zones 2 and 3 are illustrated.

**368** Priority habitats identified by Natural England are shown in **Figure 40**. These need to be reviewed and the area of Lowland Calcareous Grassland, for example, extended to include Lime Kiln Down on the south side of Salisbury.

**369** Habitats and features of historic and archaeological importance are captured and protected by a range of designations shown in **Figure 41**.

**370 Figure 42** is based on the typology used by Salisbury Area Greenspace Partnership (SAGP) which is detailed in **Figure 44**. It illustrates the areas of greenspace which are generally fully accessible as an amenity and for use by Salisbury residents and includes land in public and semi-public ownership such as parks and public gardens and some designated sites.

**371** The Connectivity and Public Rights of Way (PRoW) survey data shown in **Figure 43** provided the basis for thinking about the potential for developing a comprehensive local network of greenways for cycling and walking as illustrated in **Figure 14** and **Figure 32**. This is discussed in policies on sustainable transport and GBI and would improve access to greenspace for residents and visitors as well as supporting community resilience.

Figure 38. Topography with rivers and ridgelines

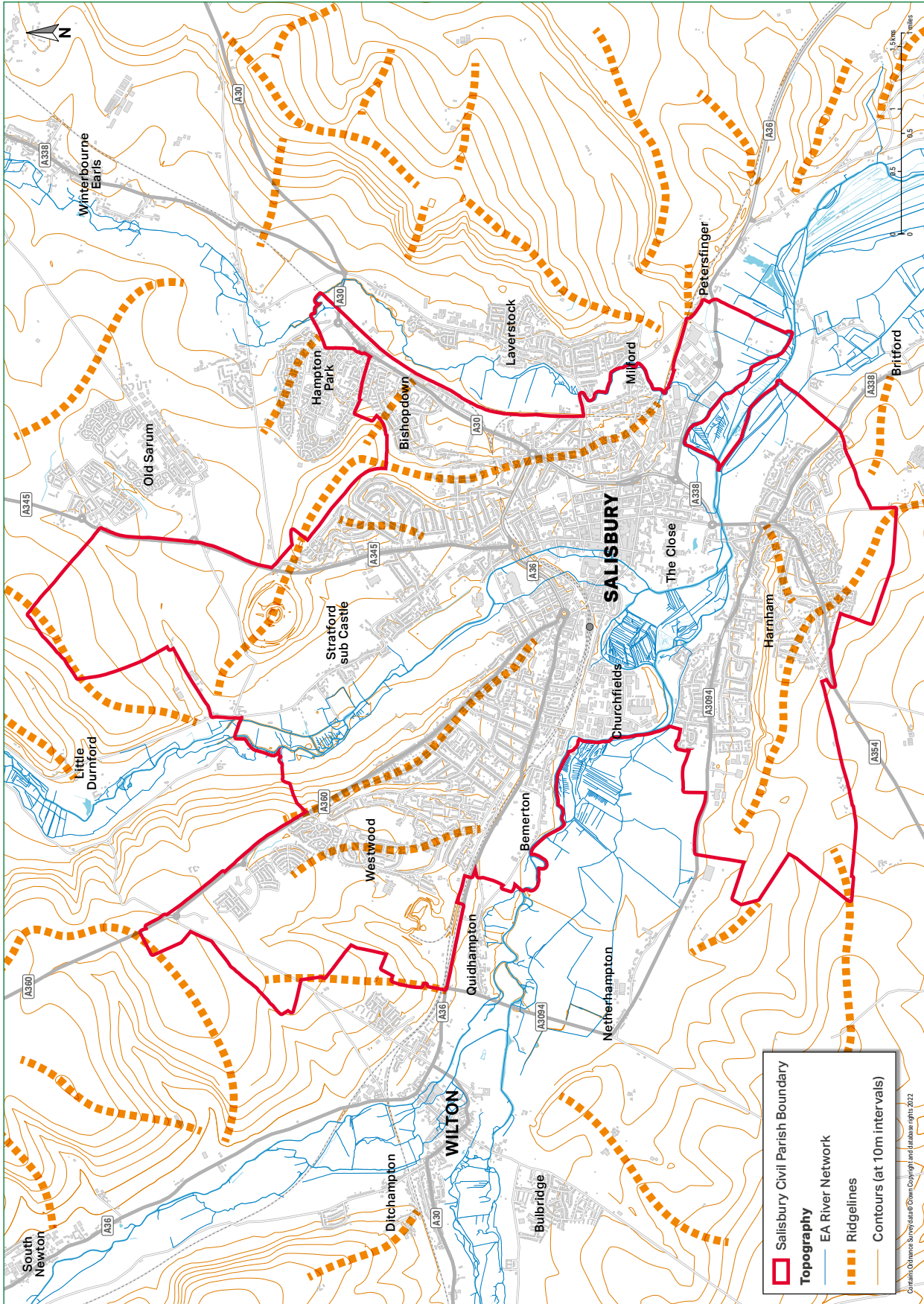


Figure 39. Flooding related to Salisbury's rivers

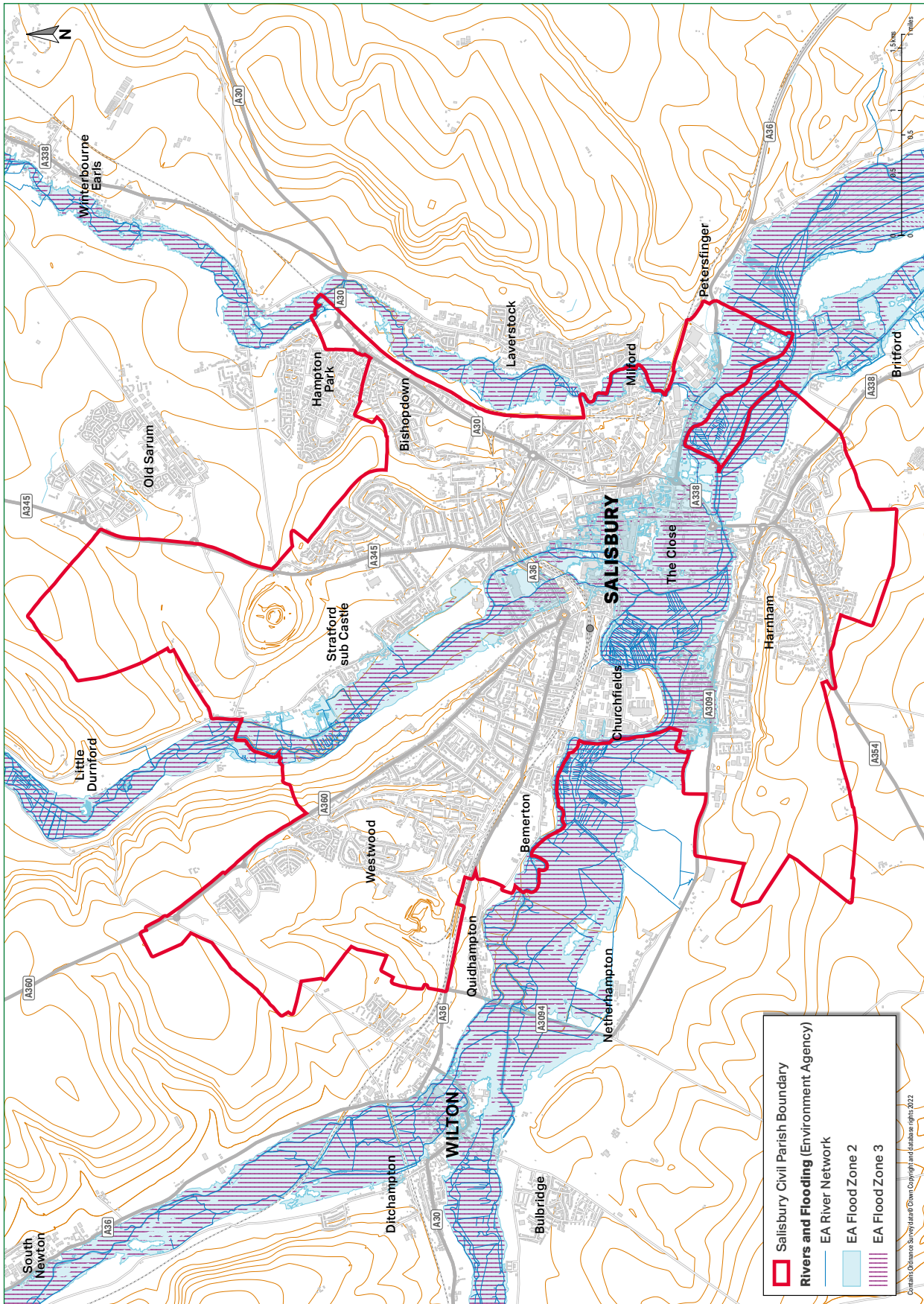
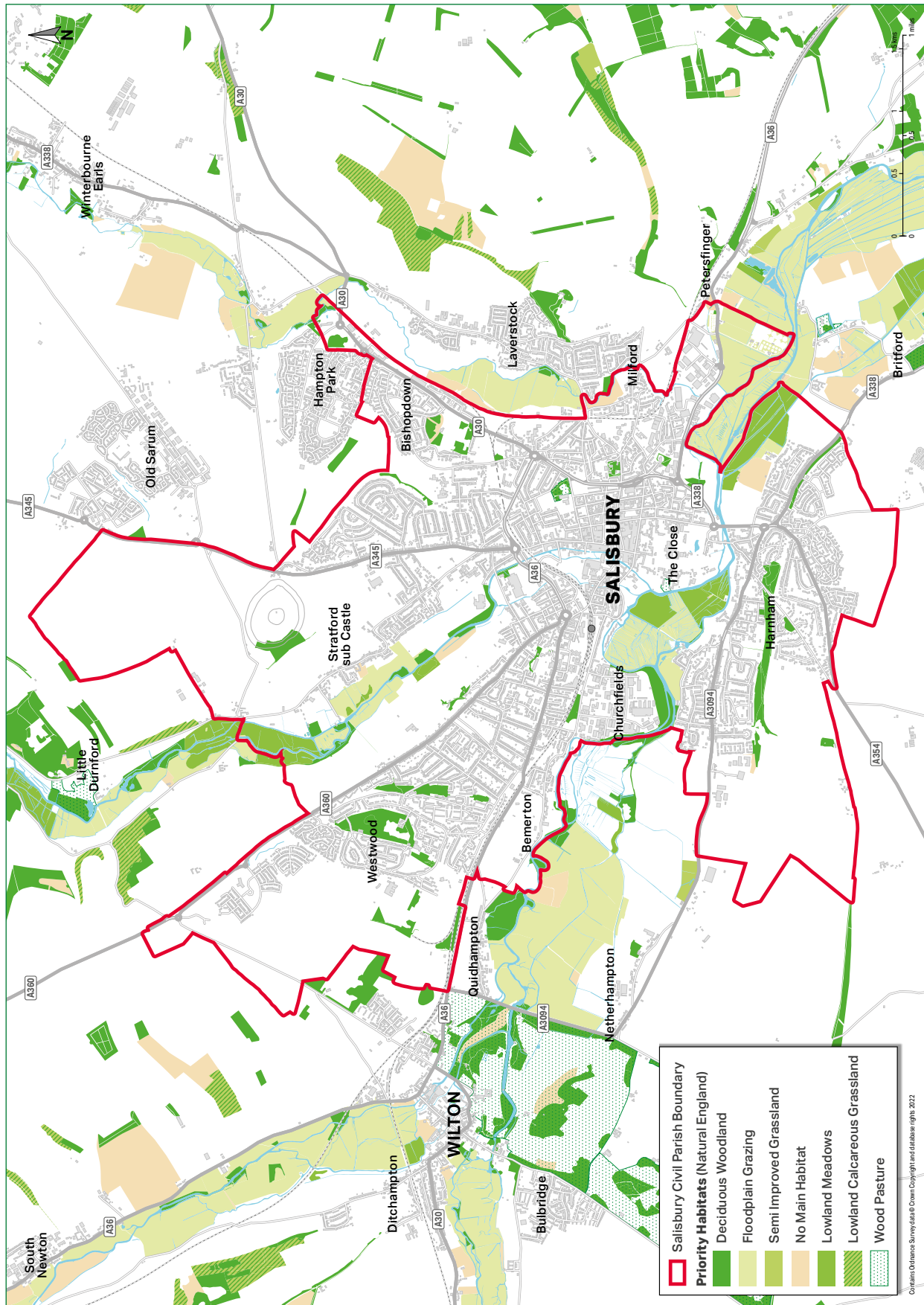


Figure 40. Priority habitats



**Figure 41. Land designations relating to the natural and historic landscape**

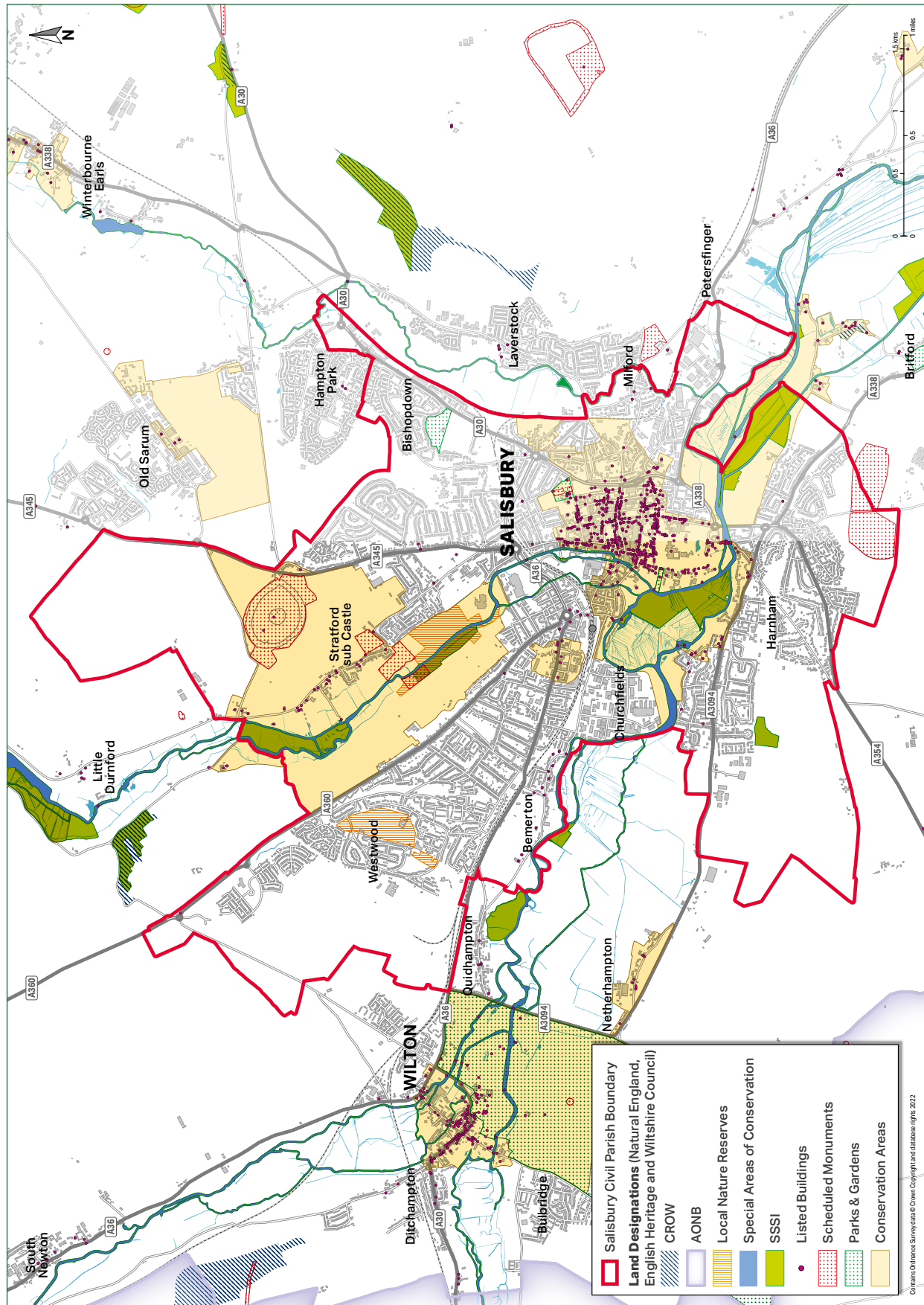


Figure 42. Green space assets

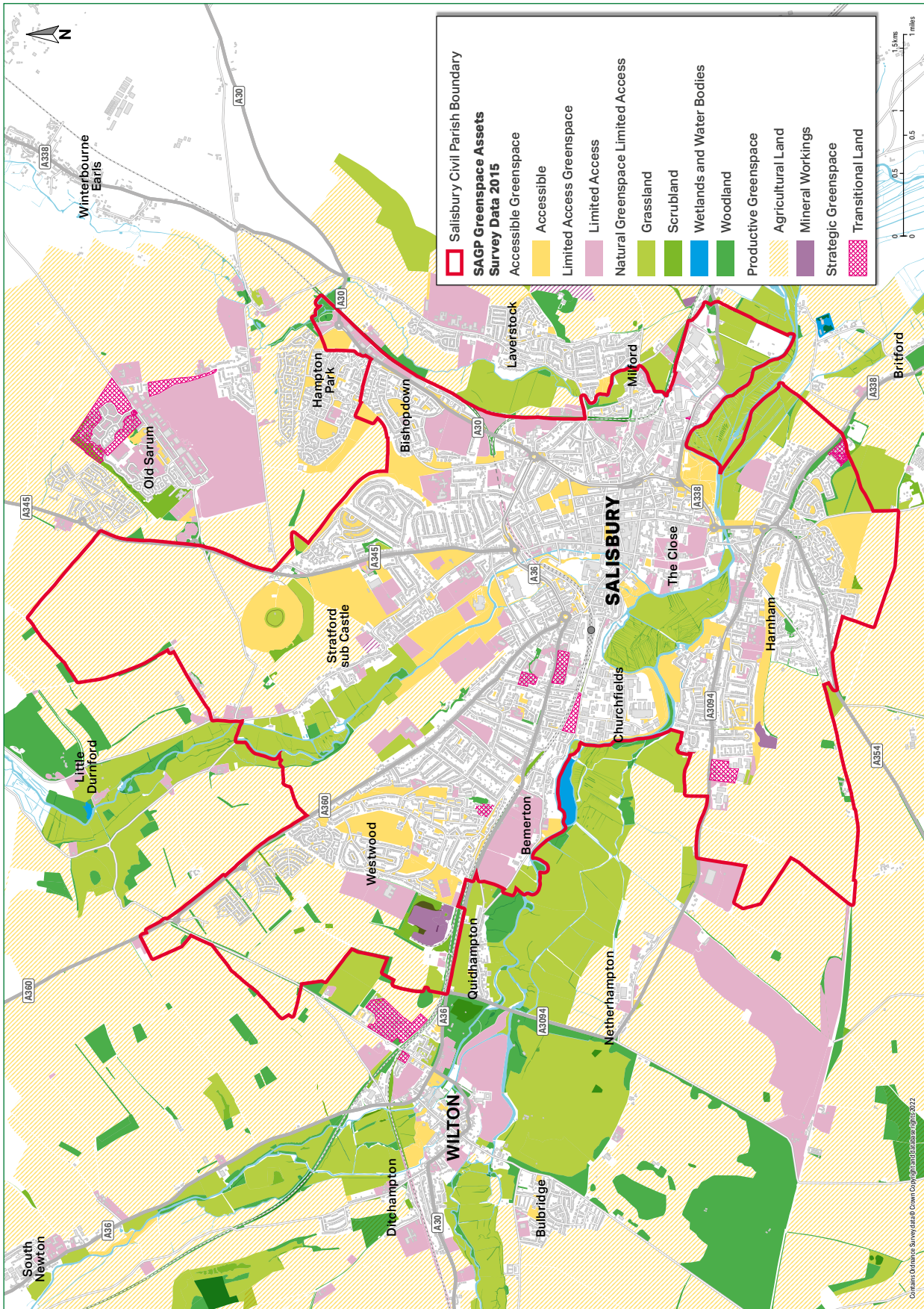
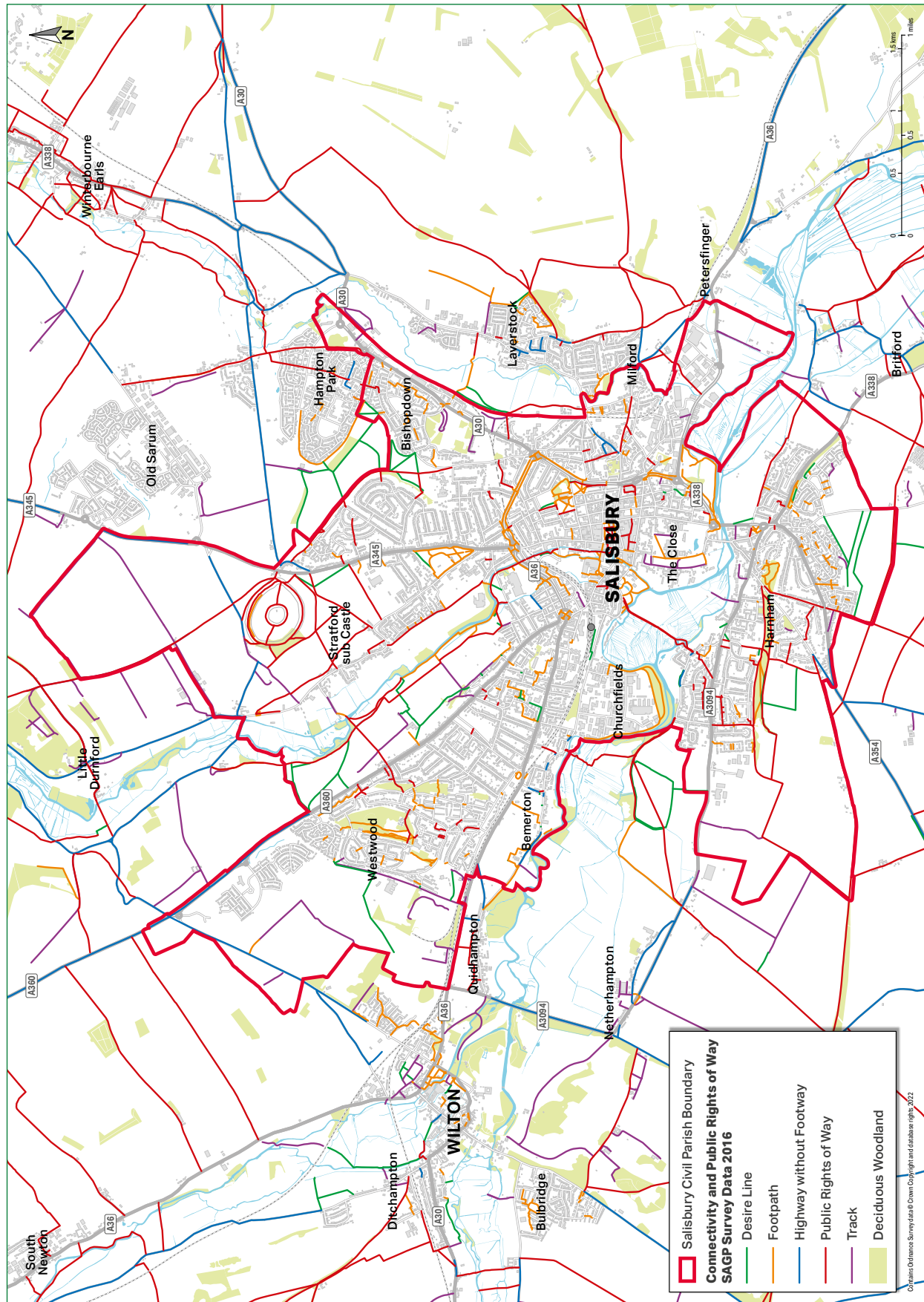


Figure 43. Connectivity and public rights of way





**Figure 44.** *Typology for mapping greenspace assets*

Type	Subtype
<b>1. Readily Accessible Community Greenspace</b>	
General Amenity Greenspace	Housing areas Town/village green Commons Informal recreational greenspace Informal amenity greenspace Larger roadside verges
Semi-natural Amenity Greenspace	Rough grassland Scrub Community woodland Wetland Riverbank
Civic Spaces	Street Trees Civic open spaces Market squares Street trees
Public Parks, Gardens and Recreation Grounds	Multi use urban parks Recreation grounds Country parks Formal gardens
Play Provision	Equipped play areas Adventure Play Ball courts Basketball hoop Football goal facilities Skateboard/BMX facilities Teenage shelters/hangout areas MUGA (Multi Use Games Area)
<b>2. Restricted/Controlled Access Greenspace</b>	
Allotments	Allotments Community gardens Urban/community farms
Cemeteries and Churchyards	Cemeteries Burial Grounds Churchyards Memorial grounds (including crematorium grounds)
Outdoor Sports Facility	Sports pitches Tennis and bowls Cricket square Golf courses Athletics School playing fields Race Course Water sports Recreational fishing/angling Outdoor swimming pool

**Figure 44.** *Typology for mapping greenspace assets (cont.)*

Type	Subtype
<b>2. Restricted/Controlled Access Greenspace (cont.)</b>	
Other Controlled Access Greenspace	Business/retail parks Industrial parks School & college grounds Health authority/hospital grounds Residential institution grounds Places of worship grounds Airfield Military training land Hotel/public house/restaurant Farm buildings Caravan/ camp site Park & ride site Institutional grounds Railway land Formal parks and gardens (paid entry)
Domestic Gardens	Significant domestic gardens
<b>3. Natural/Semi-natural Greenspace (not freely accessible to the community)</b>	
Grassland	Downland Meadow Wet meadow Parkland/wood pasture
Scrubland	Scrubland
Woodland	Deciduous woodland Mixed woodland Coniferous Woodland Plantation Copse Tree belt Avenue
Wetlands & Water Bodies	Main rivers Streams Canals/carriers/leats Lakes Ponds Reed beds Bog

**Figure 44.** *Typology for mapping greenspace assets (cont.)*

Type	Subtype
<b>4. Productive Greenspace</b>	
Agricultural Land	Arable Horticulture Stock grazing Horse paddocks Orchard Set-aside/fallow
Quarries/ mineral workings	Active quarry Disused quarry Active mineral workings Disused mineral workings
<b>5. Strategic Greenspace (Not actively managed)</b>	
Transitional Land	Vacant/derelict land Contaminated land Brownfield sites Land awaiting development
<b>6. Linear Greenspace</b>	
Linear Features including Access Routes	PRoW Network <ul style="list-style-type: none"> <li>• Footpath</li> <li>• Bridleway</li> <li>• Byway open to all traffic</li> <li>• Road used as a public path</li> </ul> Other footpaths Permissive routes Cycle routes Quiet Lanes Sustrans routes Trunk and secondary roads Tracks Rivers, carriers and canals Active railway lines Hedgerows

# Appendix 2: Habitat improvement and restoration schemes

**372** Habitat improvement schemes referred to in **policy 10** are set out in this appendix. There are 6 major and noteworthy habitats in need of management, restoration and improvement where offsite biodiversity net gain projects should be directed.

**374** **Figures 46 to 51** show the geographical extent of the six schemes.

**375** **Figure 52** is a table setting out the importance of each scheme with details of the improvements sought.

**373** **Figure 45** shows the location of each of these schemes, some of which may be an amalgam of multiple smaller sites.

**Figure 45.** *Habitat Improvement Schemes in Salisbury*

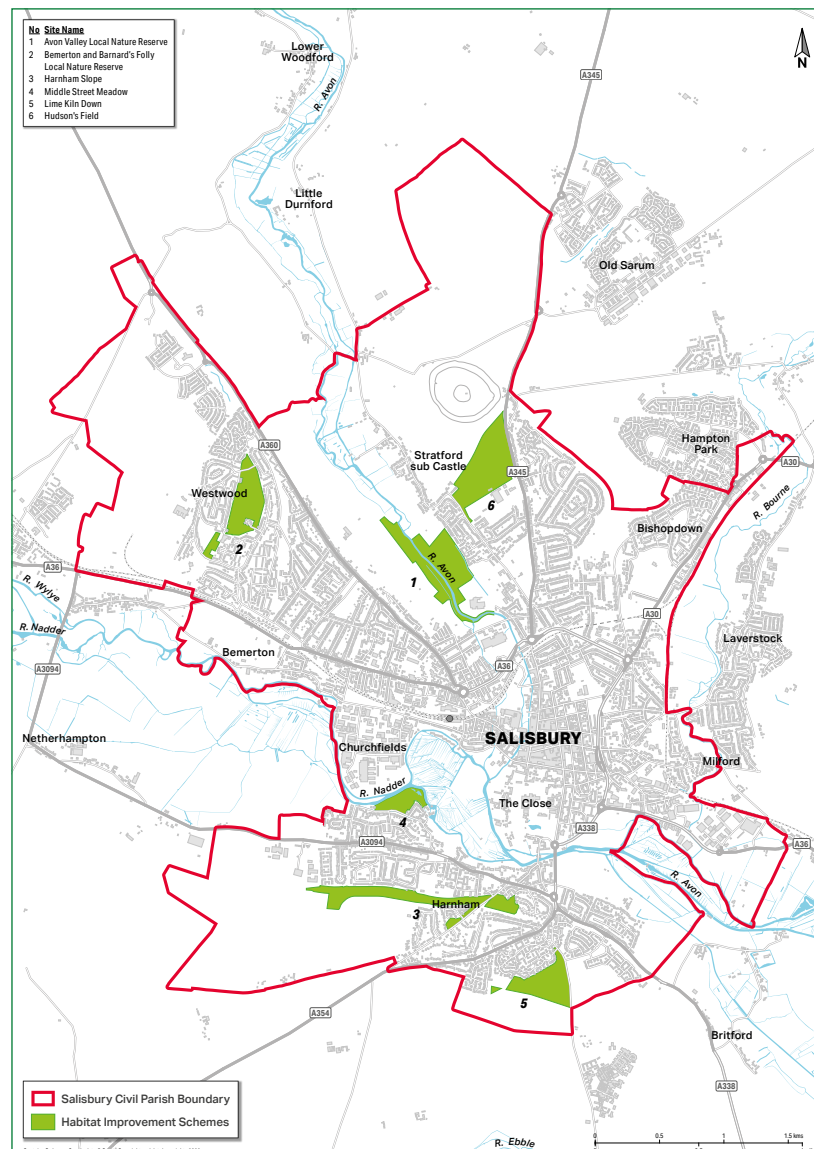
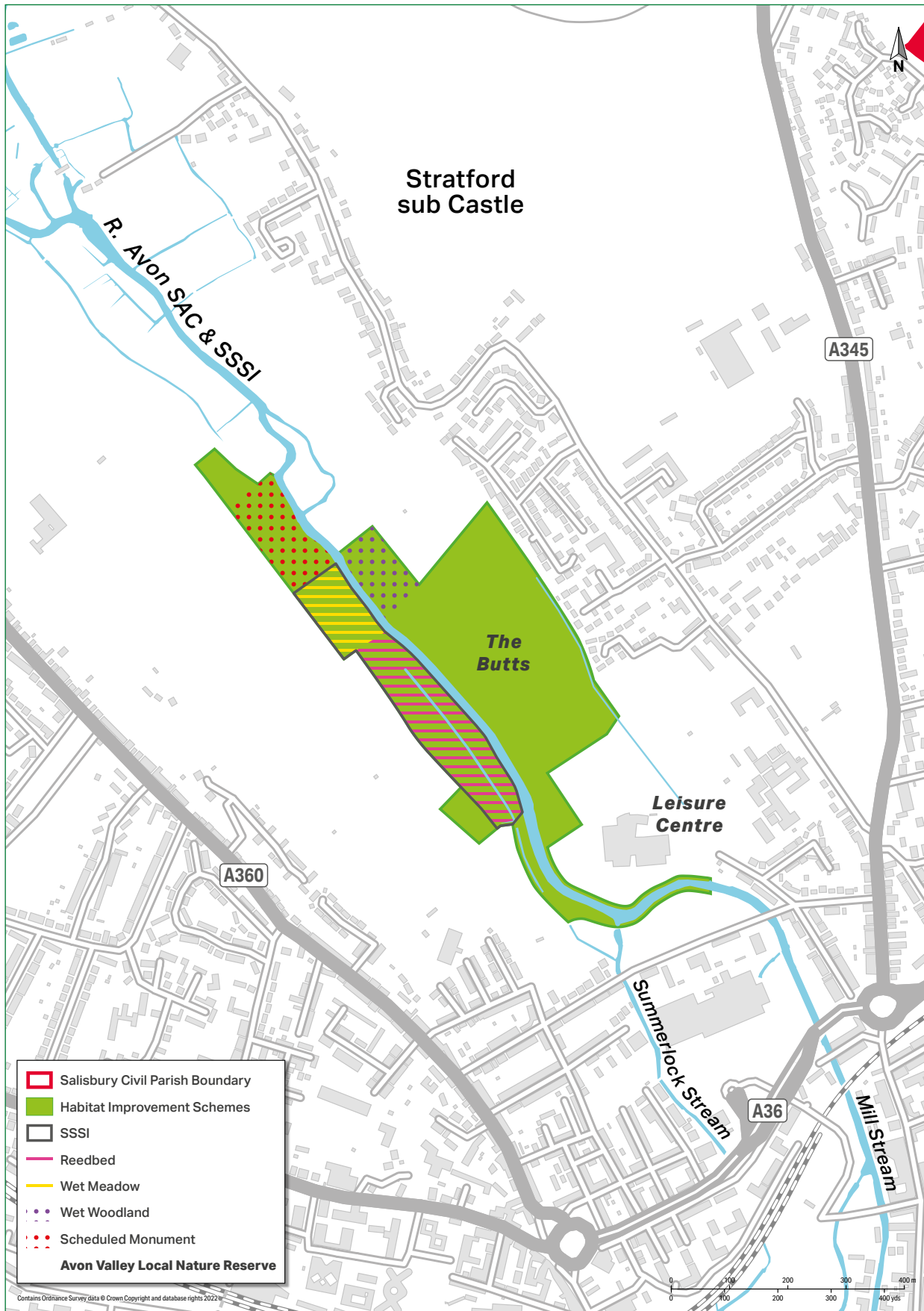


Figure 46. Avon Valley Local Nature Reserve (1)



**Figure 47.** Bemerton Folly and Bernards Folly Local Nature Reserve (2)

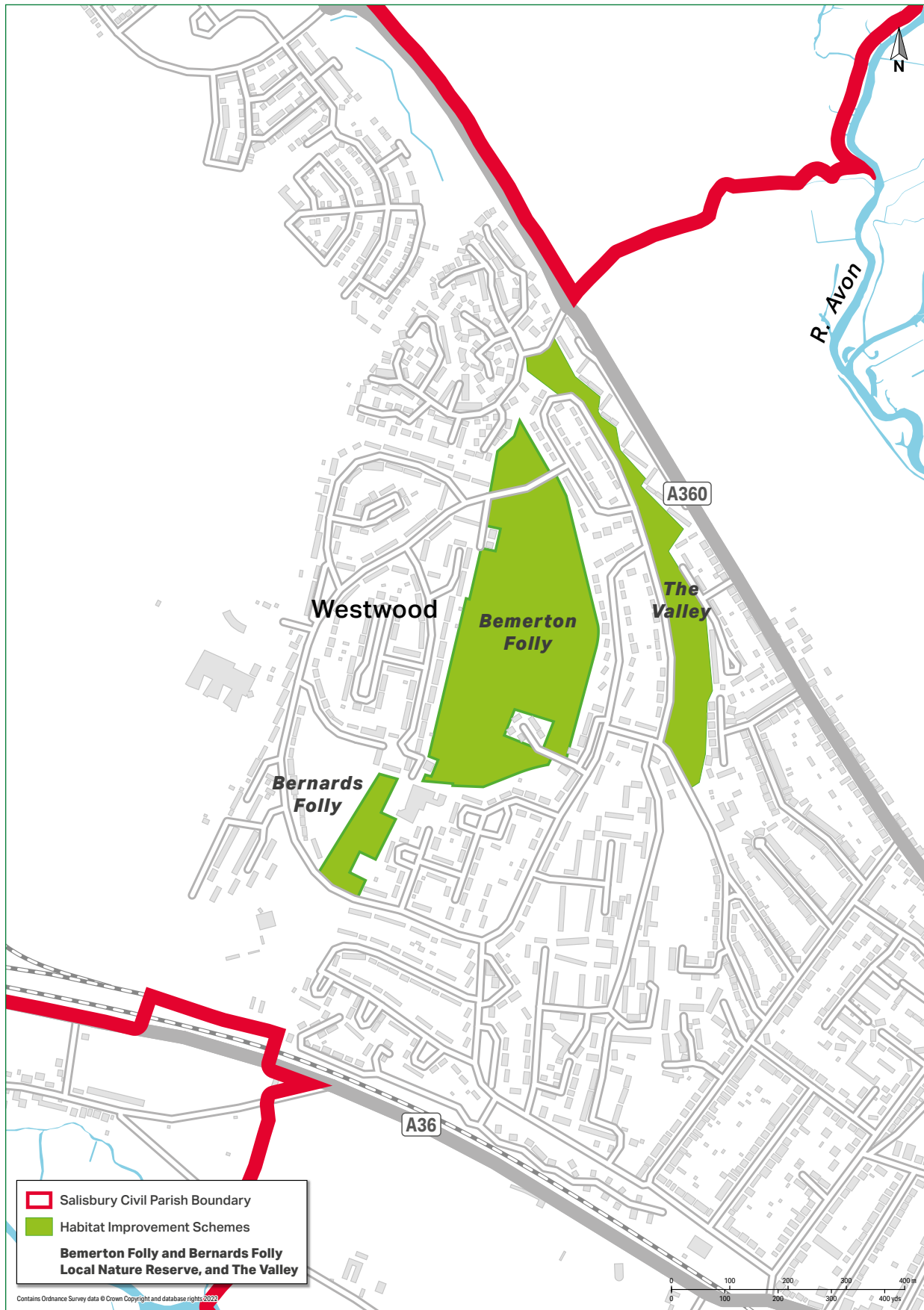


Figure 48. Harnham Slope, the Chalkpit, Harnham Folly, The Cliff and Old Blandford Road Open Space (3)

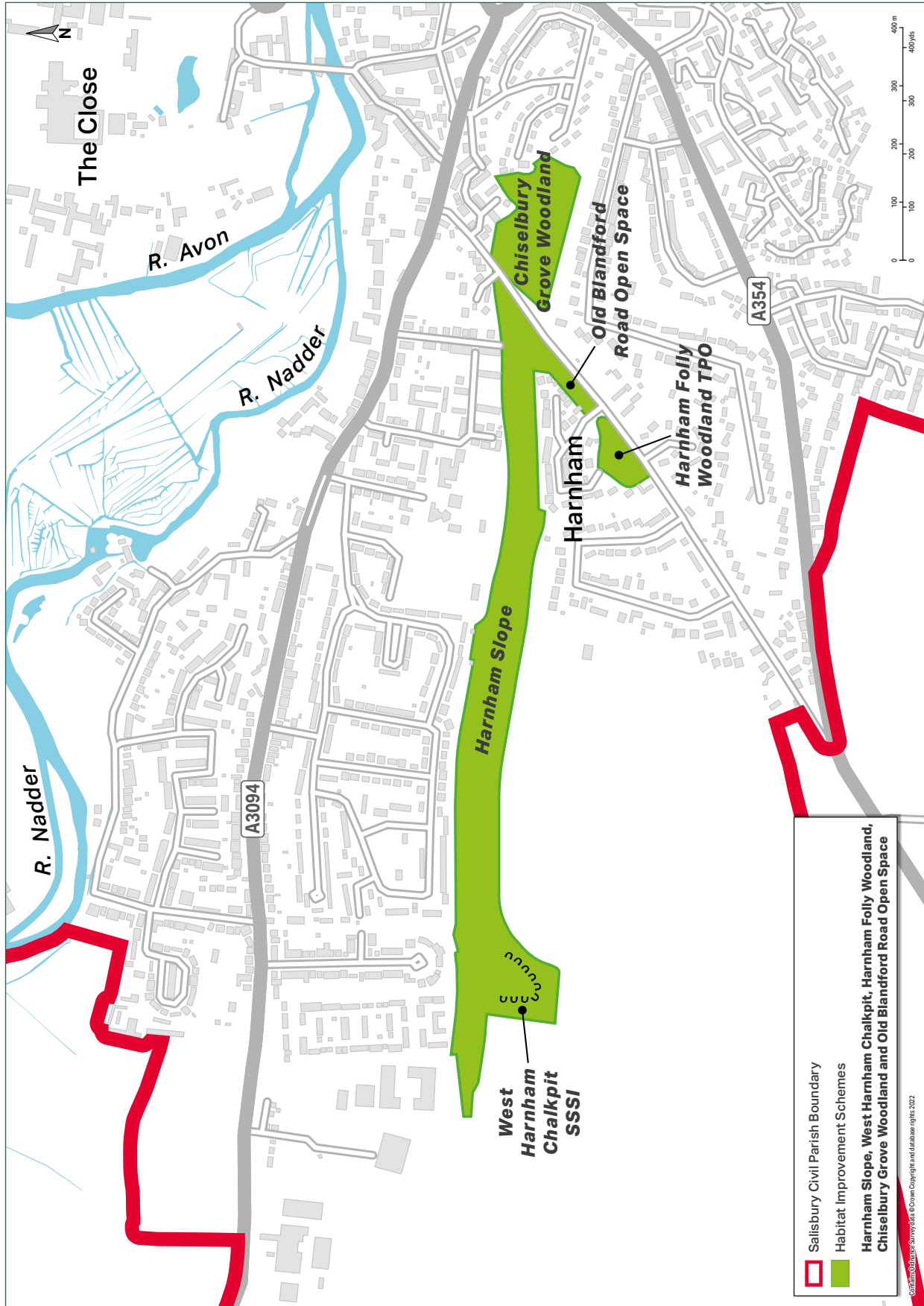


Figure 49. Middle Street Meadow (4)

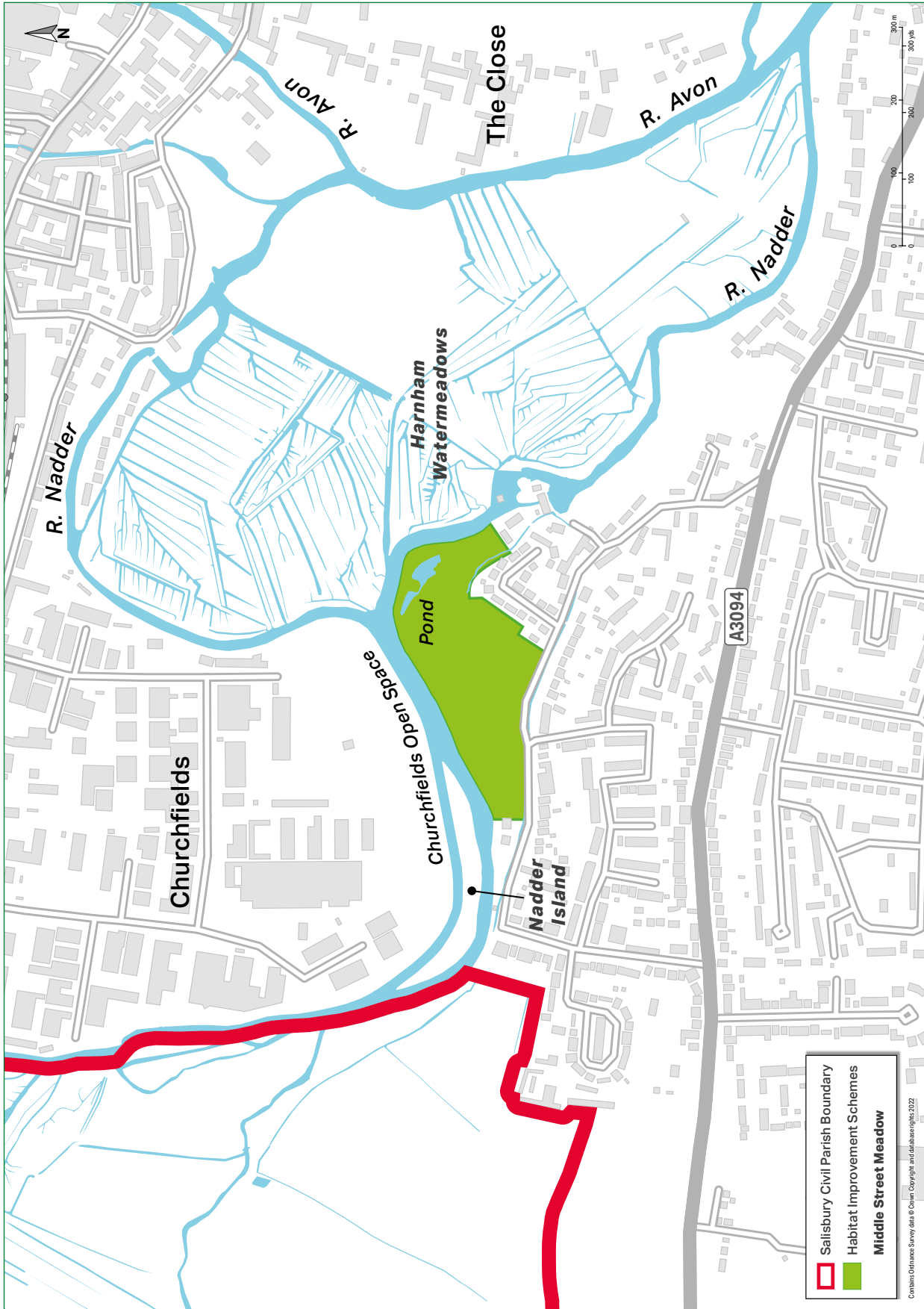
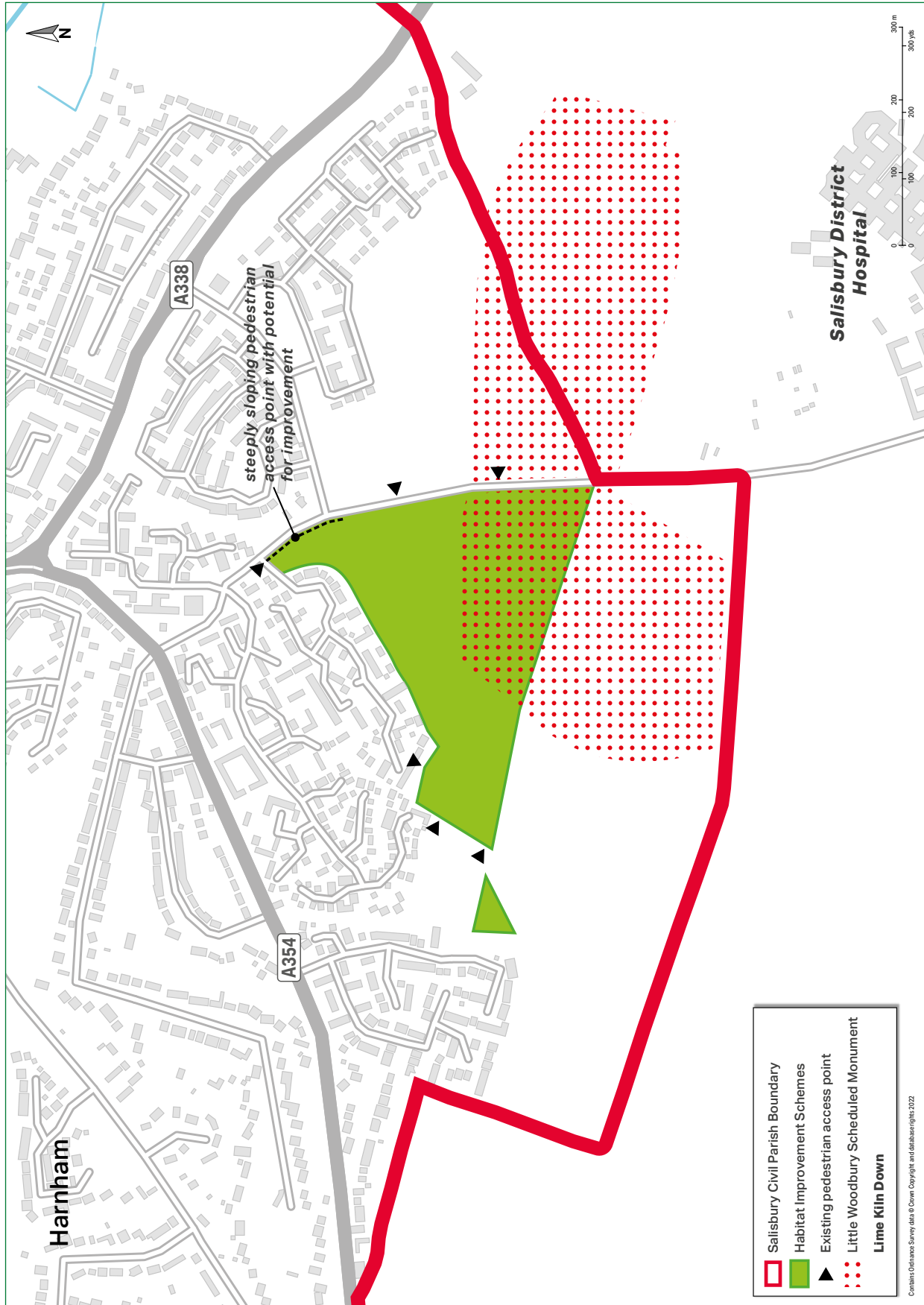
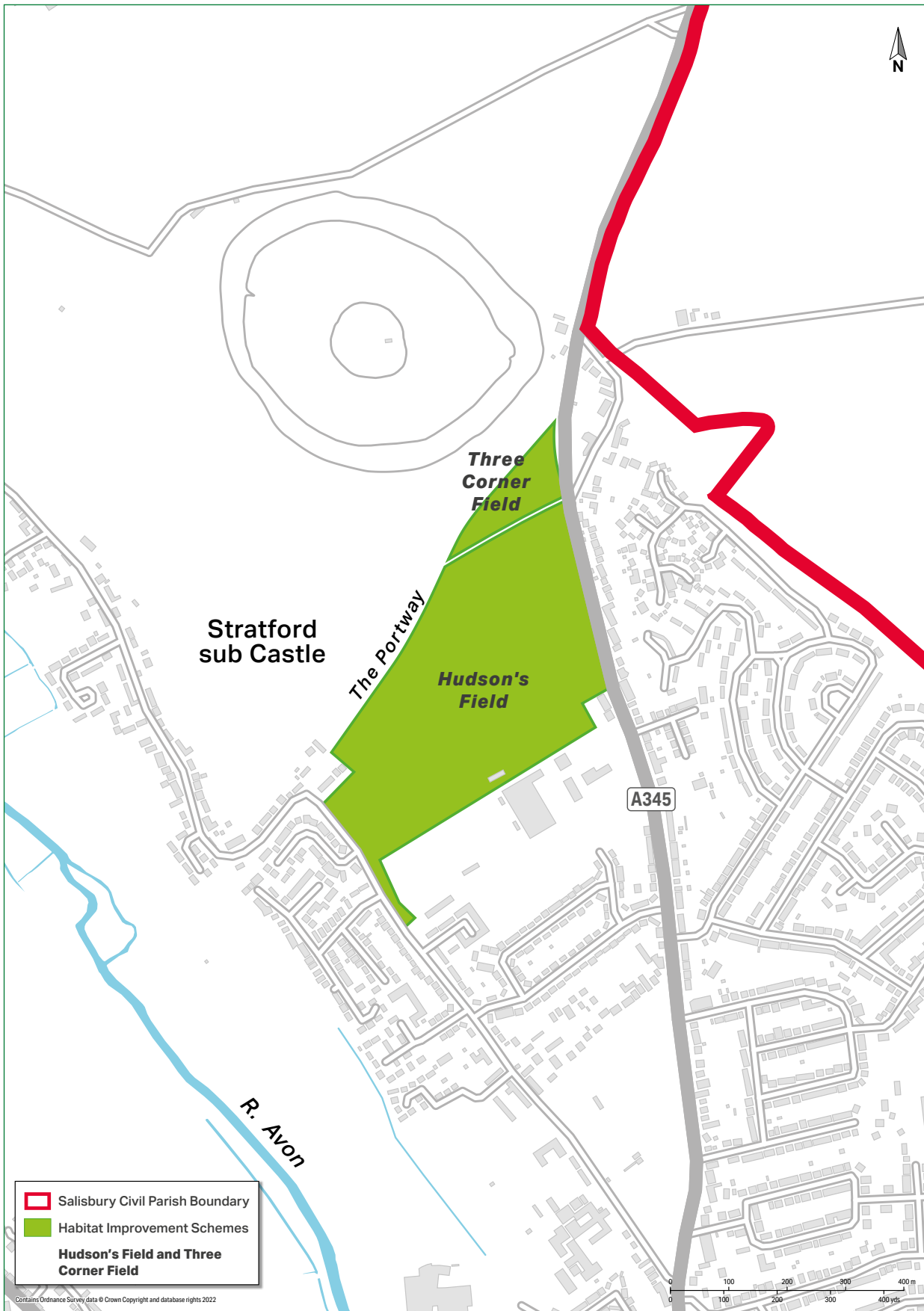




Figure 50. Lime Kiln Down (5)



**Figure 51.** Hudson's Field and Three Cornered Field (6)



**Figure 52.** Schedule of habitats improvement opportunities

**Site Name:** Avon Valley Local Nature Reserve (including the area known as “The Butts”)

**Map Ref:** 1

**Status:** SAC, SSSI, Local Nature Reserve

Existing natural features	Potential for Biodiversity Net Gain	Management considerations
<p>Main river channel of Hampshire Avon which flows through the site is a SAC site and SSSI of international importance for its species rarity and variety. The SCA Citation describes the qualifying habitats: water courses with floating vegetation of predominantly water crowfoot and the qualifying species: bullhead, brook lamprey, sea lamprey, Atlantic salmon and Desmoulin’s whorl snail.</p> <p>To the west of the river are reedbeds, part of a designated SSSI and a rare habitat type within the parish. There is an area of wet meadow and to the east of the river is an area of alder/willow wet woodland. To the east of the river is an extensive area of regenerating native trees, scrub and grassland on land which was formerly a city rubbish tip.</p> <p>The site provides valuable supportive habitats for the Hampshire Avon SAC and is an important corridor for wildlife providing connectivity for water voles, otter, bats, swifts, swallows and house martins.</p> <p>The reedbeds are important for Cetti’s warblers, reed and sedge warblers and Cuckoo</p> <p>EA considers river water quality is currently poor.</p>	<p><b>Review and update of management plan required.</b></p> <p><b>Reedbed restoration</b> i.e. re-wetting some areas to maintain this habitat type.</p> <p><b>Enhancement planting of dry meadow</b> to enrich this habitat.</p> <p><b>Riverbank habitat protection works</b> to address ongoing problems of bank erosion from dogs accessing the river.</p> <p><b>Selective tree planting</b> of appropriate species such as oak, disease resistant elm, alder.</p>	<p>The LNR is situated within the Salisbury Conservation Area and is an important part of the landscape setting for the Old Sarum Ancient Monument as well as the city itself.</p> <p>This part of the urban fringe is heavily used for recreation and dog walking and is an important corridor for people connecting the northern suburbs with the city centre.</p> <p>Out of date management plan which urgently needs to be reviewed and is not well used or understood by maintenance teams.</p> <p>Currently management tasks are carried out by Salisbury Wildlife Group volunteers on a regular basis and with the objectives of the management plan in mind.</p> <p>Ownership and management are split between SCC’s in-house maintenance team and WC’s contractors.</p> <p>Existing maintenance regimes not supportive of biodiversity enhancement.</p> <p>Major river improvement scheme downstream has now received planning consent.</p>

**Figure 52.** Schedule of habitats improvement opportunities

**Site Name:** Bemerton and Barnards Folly Local Nature Reserve and The Valley.

**Map Ref:** 2

**Status:** LNR / No designation **Site Size:** 12,1 ha

Existing natural features	Potential for Biodiversity Net Gain	Management considerations
<p>Bemerton and Barnards Folly are two linked woodland sites designated as an LNR in 2004 and planted in the early part of the 20th century, some 50 or so years prior to the housing development in the surrounding area.</p> <p>The mix of tree species include a number of broad-leaved tree species including oak, beech, ash and sycamore with a lesser number of conifers, predominantly larch, with some woodland ground flora including bluebell and raspberry. Little in the way of regeneration. Pipistrelle bats are seen in the woodland as well as tree creepers, spotted fly catchers, greater spotted woodpecker and sparrowhawk.</p> <p>SCC undertake essential woodland management and maintenance such as keeping the well-used paths cleared and try to keep the wood clear of litter and fly-tipping. In 2004 the then Environment Community Development Officer and the Salisbury Wildlife Project Officer had a remit to get local people involved with the management of the site and deliver community-based projects, but funding was withdrawn.</p>	<p><b>Management plan required</b></p> <p><b>Species enhancement</b> of appropriate woodland flora and understorey.</p> <p><b>Selective tree thinning and replanting</b> with appropriate species to maintain woodland habitat and tree cover in the light of Ash dieback and in the absence of natural regeneration.</p>	<p>Valuable urban woodland habitat.</p> <p>Very well used for access and leisure but also misused.</p> <p>SCC have indicated in their 2020 response to WC's Baseline Greenspace Survey that 'the woodland would benefit from dedicated management'.</p> <p>Ash dieback.</p>
<p>The Valley area contains valuable planted native scrub habitat but is surrounded by regularly mown grass.</p>	<p><b>Management plan required</b></p> <p><b>Enhancement of open grass sward</b> with typical chalk downland wildflower species particularly those attractive to butterflies typical of this habitat type.</p>	<p>No management plan.</p> <p>Management plan to include the redesign of area under regular mowing and reduction in number of cuts per annum.</p>

**Figure 52.** Schedule of habitats improvement opportunities

**Site Name:** Harnham Slope, the Chalkpit, Harnham Folly, The Cliff and Old Blandford Road Open Space.

**Map Ref:** 3

**Status:** Harnham Slope County Wildlife Site which includes the chalk pit geological SSSI.

Existing natural features	Potential for Biodiversity Net Gain	Management considerations
<p>These three areas of linked woodland together with Old Blandford Road Open Space provide important tree cover and habitat for wildlife, they are important for informal recreation and dog walking, they have historic and cultural associations - with John Constable and Bishop Wordsworth, and the Victorian property known as The Cliff became UK Land Forces HQ during WW2. These woodlands are also landscape setting for Salisbury forming the wooded backdrop to the cathedral The Close and city centre from the south. Harnham Slope and The Cliff are also important for the connectivity they provide for both people and wildlife.</p> <p>Harnham Slope was sheep-grazed chalk downland until the early 1900s but with increasing urbanisation and removal of grazing a mixed woodland has evolved on this steep north facing slope of Harnham Hill. A significant proportion of the trees are common ash which are now affected by ash dieback disease and will require removal for safety reasons. There are well used footpaths through the site providing access to local and city centre facilities including the station. These routes are also important for connecting the urban area with open countryside.</p> <p>The Chalkpit at the western end of Harnham Slope is a SSSI for its geological interest. The steep chalk faces remain but natural regeneration of typical chalk flora is occurring and gradually encroaching over the site in the absence of any management. It is popular with local young people for BMX type use.</p> <p>The Cliff is the remnants of a landscaped garden with viewpoints to the cathedral which have become overgrown.</p> <p>Harnham Folly is important woodland for wildlife and landscape setting at the top of Harnham Hill. A substantial part of the site has been developed for housing making it even more important to retain tree cover in this area. The remaining woodland includes a thuja plantation and over-mature beech.</p> <p>Old Blandford Road Open Space, formerly a chalkpit which was subsequently used as a rubbish tip, is regularly mown grassland with maturing trees such as beech, hornbeam and sycamore.</p>	<p><b>Management plan required</b></p> <p><b>Safeguard and encourage natural regeneration</b> of existing tree species eg. Beech on Harnham Slope and The Cliff.</p> <p><b>Replacement tree planting</b> for ash dieback of appropriate native tree species in greater variety eg. Small leaved lime, field maple, beech, holly, hazel on Harnham Slope and The Cliff.</p> <p><b>Selective thinning</b> of thuja plantation at Harnham Folly to encourage a more diverse woodland community and replacement of over mature beech with the same or similar long term species.</p>	<p>Ash dieback disease</p> <p>Ownership of Harnham Slope is split between Wiltshire Council, Salisbury City Council and the Chalkpit is in private ownership.</p> <p>There are no formally adopted management plans but there is a community generated plan – see <a href="http://www.southwilts.com/site/HarnhamSlope/Harnham%20Slope%20Plan%20Leaflet.pdf">http://www.southwilts.com/site/HarnhamSlope/Harnham%20Slope%20Plan%20Leaflet.pdf</a></p> <p>The Friends Of Harnham Slope (FOHS) undertake some management and maintenance tasks eg bird boxes, creating steps and glades, managing scrub, etc.</p> <p>The three larger areas of woodland are under pressure and this will increase as nearby housing development approved in 2019/20 comes into occupation.</p> <p>Improvements to the well used footpaths across the site including retaining path edges where the ground is steeply sloping, would be beneficial.</p> <p>Harnham Folly is in private ownership but there has been very little maintenance undertaken. It has been under threat from development for housing in the past but rejected on appeal four times including earlier in 2021.</p>

**Figure 52.** Schedule of habitats improvement opportunities

**Site Name:** Middle Street Meadow

**Map Ref:** 4

**Status:** County Wildlife Site

Existing natural features	Potential for Biodiversity Net Gain	Management considerations
<p>Middle Street Meadow is a former watermeadow and is part of the green corridor along the River Nadder which extends into the city centre and includes the adjoining Harnham Watermeadows, the Wiltshire Wildlife Trust reserve called Nadder Island and Churchfields Open Space.</p> <p>It is a priority lowland meadow habitat supporting diverse plant and animal communities including extensive reed beds. In 2008 the flood bank was moved further from the river to increase flood plain capacity and create a wetland area including a pond. It was designated a County Wildlife Site in 2013.</p>	<p><b>Selective clearance</b> of bramble to maintain the biodiversity of the open areas for insects and especially butterflies.</p> <p>Maintenance of some open areas around the pond to decrease shading whilst maintaining cover for visiting birds and otters.</p>	<p>Extensive spread of bramble.</p> <p>The Friends of Middle Street Meadow undertake regular management tasks and wildlife monitoring in liaison with SCC.</p> <p>The current management plan is under review by the Salisbury City Council parks department.</p>

**Site Name:** Lime Kiln Down

**Map Ref:** 5

**Status:** County Wildlife Site and Scheduled Monument **Site Size:** 9,8 ha

Existing natural features	Potential for Biodiversity Net Gain	Management considerations
<p>This site was intensively farmed until the late 1980s. It now has a rich mosaic of habitats including important chalk grassland known as downland and scrub, a priority habitat. There are also dense hedgerows and a belt of maturing trees on site. It is well used for informal recreation, is important landscape setting for Salisbury and there are extensive views to the cathedral and city and beyond to Salisbury Plain.</p> <p>It was designated a County Wildlife Site in 2013 and is home to species of plants, birds and insects which are rare or threatened in Wiltshire including birds such as corn bunting, linnet, common and lesser whitethroat and yellowhammer.</p> <p>Part of the site is occupied by the Little Woodbury Scheduled Monument.</p>	<p><b>Selective thinning</b> of maturing mixed species tree belt along the north boundary of the site to favour the long term species.</p> <p>Scrub management and grubbing out of larger specimens by mechanical means.</p>	<p>SCC and WC are joint owners but SCC have management responsibility for the site.</p> <p>The aim is to maintain the mosaic of habitats and keep the species rich chalk downland plant community open by controlling undue scrub encroachment as well as invasive perennial species.</p> <p>A management plan has been put together by Salisbury Wildlife Group who also organise the Lime Kiln Down Volunteers and carry out regular management tasks.</p> <p>Improvements to the steep access to the site from the north east corner would be beneficial particularly in view of greater use from housing development on the nearby Rowbarrow site.</p>

**Figure 52.** *Schedule of habitats improvement opportunities*

**Site Name:** Hudson’s Field and Three Corner Field north of the Portway

**Map Ref:** 6

**Status:** County Wildlife Site

Existing natural features	Potential for Biodiversity Net Gain	Management considerations
<p>Hudson’s Field is named after Alderman John Cattell Hudson, Mayor of Salisbury in 1926/27 who left money in his will towards the purchase of the land. He supported CPRE and was keen to protect the setting of Old Sarum. It is used extensively for sport but large areas of open grassland with some trees remain around the sports pitches.</p>	<p><b>Selective tree planting</b> associated with taller grass areas and along Castle Road.</p> <p>Enhancement of grassland habitat with typical chalk downland wildflower species. Tree planting along roadside</p> <p>Hedgerow planting including along the Castle Road boundary.</p>	<p>No management plan.</p> <p>Management plan needs to include the redesign of area under regular mowing and reduction in number of cuts per annum.</p>
<p>These sites are located in the Stratford Conservation Area and make an important contribution to the setting of the Old Sarum Hill Fort Scheduled Monument.</p>		

# Appendix 3: Open Space Provision and Local Green Spaces

**Derived from Wiltshire Council's Draft Open Space Data produced in 2020 with minor amendments**  
**NB** This schedule identifies all significant green spaces but does not include smaller amenity areas in and around housing areas. Sites 1-62 are owned and/or managed by Salisbury City Council.

**Abbreviations:** SSSI - Site of Special Scientific Interest; SAC - Special Area of Conservation; CWS - County Wildlife Site; TPO - Tree Preservation Order; SM - Scheduled Monument; LG - Listed Garden

**Figure 53.** Schedule of Open Space Provision by Type in Salisbury

Number	Site Name	Typology	Age Range(s)	Usage	Quality	Evidence of maintenance?	Improvement Required?	Does it meet local need?	Comments/Issues
1	Bishopdown Open Space	Accessible Natural Green Space	All	High	Average	Yes	Yes	Yes	Would benefit from introduction of dedicated Management Opportunity for tree planting along roadside
2	Hilltop Way Open Space	Accessible Natural Green Space	All	High	Average	Yes	Yes	Yes	Would benefit from introduction of dedicated Management
3	Churchfields Open Space	Accessible Natural Green Space	All	High	Average	Yes	Yes	Yes	Would benefit from introduction of dedicated Management
4	Westwood Road Open Space (around Harlequin football ground)	Amenity Green Space	All	High	Average	Yes	Yes	Yes	Would benefit from introduction of dedicated Management
5	Bemerton Folly Local Nature Reserve	Accessible Natural Green Space	All	High	Average	Yes	Yes	Yes	Would benefit from introduction of dedicated Management
6	Avon Valley Local Nature Reserve, part SSSI, part SM, River Avon SAC (Primrose Farm, West Bank)	Accessible Natural Green Space	All	High	Good	Yes	Yes	Yes	Does have a management plan but requires revising and updating



**Figure 53. Schedule of Open Space Provision by Type in Salisbury (cont.)**

Number	Site Name	Typology	Age Range(s)	Usage	Quality	Evidence of maintenance?	Improvement Required?	Does it meet local need?	Comments/Issues
7	Middle Street Meadow Open Space CWS	Accessible Natural Green Space	All	High	Good	Yes	Yes	Yes	Very active friends of group and management plan in place
8	Old Blandford Road Open Space	Accessible Natural Green Space	All	Medium	Average	Yes	Yes	Yes	Mainly used for dog walking
9	Chiselbury Grove Woodland	Accessible Natural Green Space	All	High	Average	Yes	Yes	Yes	A wooded area and part of former Victorian house known as The Cliff and its garden
10	Lime Kiln Down/Way Open Space CWS and part SM	Accessible Natural Green Space	All	High	Good	Yes	Yes	Yes	Very active friends of group in operation – has a management plan. Has potential to become a Local Nature Reserve. Would benefit from improved access from Lime Kiln Way
11	St Marks Open Space	Accessible Natural Green Space	All	High	Good	Yes	Yes	Yes	Would benefit from introduction of dedicated Management
12	Milford Hollow	Accessible Natural Green Space	All	High	Average	Yes	Yes	Yes	Paths would benefit from being upgraded
13	Barnard's Folly Local Nature Reserve	Accessible Natural Green Space	All	High	Average	Yes	Yes	Yes	A wooded area signage and paths upgrade required
14	Harnham Slope CWS including Carrion Pond/Drove	Accessible Natural Green Space	All	High	Average	Yes	Yes	Yes	Very active friends of group in operation. Does have management plan but could do with updating
15	Queen Elizabeth Gardens	Park and Recreation Ground	All	High	Good	Yes	Yes	Yes	Formal Park Space

**Figure 53. Schedule of Open Space Provision by Type in Salisbury (cont.)**

Number	Site Name	Typology	Age Range(s)	Usage	Quality	Evidence of maintenance?	Improvement Required?	Does it meet local need?	Comments/Issues
16	Victoria Park	Park and Recreation Ground	All	High	Good	Yes	Yes	Yes	Intention to secure Green Flag Award – Autumn 2020
17	Churchill Gardens	Park and Recreation Ground	All	High	Good	Yes	Yes	Yes	Would benefit from introduction of dedicated Management
18	The Green Croft	Park and Recreation Ground	All	High	Adequate	Yes	Yes	Yes	Would benefit from introduction of dedicated Management
19	Bourne Hill House Gardens LG and part SM	Park and Recreation Ground	All	High	Good	Yes	Yes	Yes	Would benefit from introduction of dedicated Management
20	Wyndham Road Open Space	Park and Recreation Ground	All	High	Good	Yes	Yes	Yes	Would benefit from introduction of dedicated Management
21	New Bridge Road North Open Space	Amenity Green Space	All	High	Good	Yes	Yes	Yes	Potential for small general improvements
22	Parsonage Green Sports Field	Park and Recreation Ground	All	Medium	Good	Yes	Yes	Yes	Potential for small general improvements
23	Ashley Road Open Space	Amenity Green Space	All	High	Good	Yes	Yes	Yes	Would benefit from introduction of dedicated Management
24	Meyrick Close Open Space	Park and Recreation Ground	All	High	Good	Yes	Yes	Yes	Potential for small general improvements
25	Lower Bemerton Open space	Park and Recreation Ground	All	High	Good	Yes	Yes	Yes	Would benefit from introduction of dedicated Management
27	Portway Sports Ground	Park and Recreation Ground	05-Dec	Medium	Good	Yes	Yes	Yes	Potential for small general improvements

**Figure 53. Schedule of Open Space Provision by Type in Salisbury (cont.)**

Number	Site Name	Typology	Age Range(s)	Usage	Quality	Evidence of maintenance?	Improvement Required?	Does it meet local need?	Comments/Issues
28	Bishopdown Sports Field	Park and Recreation Ground	All	High	Good	Yes	Yes	Yes	Potential for small general improvements
29	Hudson's Field	Park and Recreation Ground	All	High	Good	Yes	Yes	Yes	Would benefit from introduction of dedicated Management
30	Fairfield Road Open Space	Amenity Green Space	All	High	Good	Yes	Yes	Yes	Potential for small general improvements
31	Salisbury Camping and Caravanning Club Site	Amenity Green Space	All	Medium	Good	Yes	Yes	Yes	Potential for small general improvements
32	Maltings Open Space	Amenity Green Space	All	High	Good	Yes	Yes	Yes	Potential for small general improvements
33	Westwood Allotments	Allotments	18+	Medium	Adequate	Yes	Yes	Yes	In need of minor maintenance
34	Fisherton Farm A,B,C&D Allotments	Allotments	18+	High	Adequate	Yes	Yes	Yes	In need of minor maintenance
35	Coldharbour Lane Allotments	Allotments	18+	High	Adequate	Yes	Yes	Yes	In need of minor maintenance
36	Butts Allotments	Allotments	18+	High	Adequate	Yes	Yes	Yes	In need of minor maintenance
37	Warres Trust Parsonage Green Allotment	Allotments	18+	High	Adequate	Yes	Yes	Yes	In need of minor maintenance
38	Wiltshire Road Harnham Allotments	Allotments	18+	High	Adequate	Yes	Yes	Yes	In need of minor maintenance
39	Tunnel Allotments	Allotments	18+	High	Adequate	Yes	Yes	Yes	In need of minor maintenance
40	London Road Allotments	Allotments	18+	High	Adequate	Yes	Yes	Yes	In need of minor maintenance

**Figure 53. Schedule of Open Space Provision by Type in Salisbury (cont.)**

Number	Site Name	Typology	Age Range(s)	Usage	Quality	Evidence of maintenance?	Improvement Required?	Does it meet local need?	Comments/Issues
41	Salisbury Crematorium LG of Remembrance	Churchyards and Cemeteries	All	High	Adequate	Yes	Yes	Yes	In need of minor maintenance
42	London Road Cemetery	Churchyards and Cemeteries	All	High	Adequate	Yes	Yes	Yes	In need of minor maintenance
43	Devizes Road Cemetery	Churchyards and Cemeteries	All	High	Adequate	Yes	Yes	Yes	In need of minor maintenance
44	Avenue Cemetery	Churchyards and Cemeteries	All	Medium	Very Good	Yes	Yes	Yes	New cemetery
45	St John`s Church Yard	Churchyards and Cemeteries	All	Medium	Adequate	Yes	Yes	Yes	In need of minor maintenance
46	St Clements Church Yard	Churchyards and Cemeteries	All	Medium	Adequate	Yes	Yes	Yes	In need of minor maintenance
39	Tunnel Allotments	Allotments	18+	High	Adequate	Yes	Yes	Yes	In need of minor maintenance
40	London Road Allotments	Allotments	18+	High	Adequate	Yes	Yes	Yes	In need of minor maintenance
41	Salisbury Crematorium Listed Garden of Remembrance	Churchyards and Cemeteries	All	High	Adequate	Yes	Yes	Yes	In need of minor maintenance
42	London Road Cemetery	Churchyards and Cemeteries	All	High	Adequate	Yes	Yes	Yes	In need of minor maintenance
43	Devizes Road Cemetery	Churchyards and Cemeteries	All	High	Adequate	Yes	Yes	Yes	In need of minor maintenance
44	Avenue Cemetery	Churchyards and Cemeteries	All	Medium	Very Good	Yes	Yes	Yes	New cemetery

**Figure 53. Schedule of Open Space Provision by Type in Salisbury (cont.)**

Number	Site Name	Typology	Age Range(s)	Usage	Quality	Evidence of maintenance?	Improvement Required?	Does it meet local need?	Comments/Issues
45	St John`s Church Yard	Churchyards and Cemeteries	All	Medium	Adequate	Yes	Yes	Yes	In need of minor maintenance
46	St Clements Church Yard	Churchyards and Cemeteries	All	Medium	Adequate	Yes	Yes	Yes	In need of minor maintenance
47	St Martin's Church Yard	Churchyards and Cemeteries	All	High	Adequate	Yes	Yes	Yes	In need of minor maintenance
48	St Thomas' Church Yard	Churchyards and Cemeteries	All	High	Adequate	Yes	Yes	Yes	In need of minor maintenance Potential for biodiversity uplift
49	St Edmund's Church Yard	Churchyards and Cemeteries	All	High	Adequate	Yes	Yes	Yes	In need of minor maintenance
50	Skew Bridge Open Space, Pembroke Road	Amenity Green Space	All	Medium	Adequate	Yes	Yes	Yes	In need of minor maintenance Potential for additional native tree and shrub planting
51	Fisherton Street/ Crane Bridge Riverside Walk	Amenity Green Space	All	High	Adequate	Yes	Yes	Yes	In need of minor maintenance
52	St Francis Road Crescent	Amenity Green Space	All	High	Adequate	Yes	Yes	Yes	In need of minor maintenance
53	Harnham Recreation Ground	Park and Recreation Ground	All	High	Good	Yes	Yes	Yes	Would benefit from introduction of dedicated Management
54	Parsonage Green Open Space	Amenity Green Space	All	High	Good	Yes	Yes	Yes	Would benefit from introduction of dedicated Management Potential for biodiversity uplift
55	Pinewood Way Open Space	Amenity Green Space	All	High	Average	Yes	Yes	Yes	Would benefit from introduction of dedicated Management

**Figure 53. Schedule of Open Space Provision by Type in Salisbury (cont.)**

Number	Site Name	Typology	Age Range(s)	Usage	Quality	Evidence of maintenance?	Improvement Required?	Does it meet local need?	Comments/Issues
56	New Bridge Road South Open Space	Amenity Green Space	All	High	Good	Yes	Yes	Yes	Potential for small general improvements including upgrade of strong desire line
57	Ayleswade Road Open Space	Amenity Green Space	All	High	Good	Yes	Yes	Yes	Potential for small general improvements
58	Fisherton Paddocks	Allotments	18+	Medium	Adequate	Yes	Yes	Yes	In need of minor maintenance
59	Stratford Road Allotments	Allotments	18+	High	Adequate	Yes	Yes	Yes	In need of minor maintenance
60	Cow Lane Allotments (Laverstock and Ford)	Allotments	18+	High	Adequate	Yes	Yes	Yes	In need of minor maintenance
61	St Andrew's Church Yard	Churchyards and Cemeteries	All	Medium	Adequate	Yes	Yes	Yes	In need of minor maintenance
62	Link Way Open Space	Accessible Natural Green Space	All	High	Average	Yes	Yes	Yes	Would benefit from introduction of dedicated Management
63	Salisbury Cathedral School	Education	5-12	High	Good	Yes	No	Yes	
64	Salisbury Cathedral School Playing Fields	Education	5-12	Medium	Good	Yes	Yes	Yes	Potential for biodiversity uplift
65	Salisbury Cathedral School Playing Fields	Education	5-12	Medium	Good	Yes	Yes	Yes	Potential for biodiversity uplift
66	Cathedral Green (Former churchyard)	Churchyards and Cemeteries	All	High	Good	Yes	Yes	Yes	Potential for additional tree planting and alleviation of compaction around existing trees
67	Choristers Green	Amenity Green Space	All	High	Good	Yes	No	Yes	

**Figure 53. Schedule of Open Space Provision by Type in Salisbury (cont.)**

Number	Site Name	Typology	Age Range(s)	Usage	Quality	Evidence of maintenance?	Improvement Required?	Does it meet local need?	Comments/Issues
68	St Francis Church	Churchyards and Cemeteries	All	Medium	Good	Yes	Yes	Yes	Further potential for biodiversity uplift
69	Millenium Close Open Space Rowbarrow SM	Amenity Green Space	All	Medium	Good	Yes	Yes	Yes	Potential to enrich grass and species diversity
70	Rowbarrow Green Open Space	Amenity Green Space	All	Low	Adequate	Yes	Yes	Yes	Potential for tree planting and general enhancement
71	Downton Road Commemorative Beech Tree Belt TPO	Accessible Natural Green Space	All	Medium	Adequate	No	Yes	Yes	Litter clearance Retain open understorey to favour White Helleborine
72	Odstock Road Commemorative Beech Tree Belt TPO	Accessible natural Green Space	All	Medium	Adequate	Yes	Yes	Yes	Litter clearance Retain open understorey to favour White Helleborine Tree surgery as required
73	Leehurst Swan School	Education	5-16	High	Good	Yes	Yes	Yes	Potential for biodiversity uplift
74	Godolphin School	Education	5-18	High	Good	Yes	Yes	Yes	Potential for biodiversity uplift
75	Godolphin School Multi Use Games Area	Education	5-18	High	Good	Yes	No	Yes	
76	St Martins C of E Primary School	Education	5-12	High	Good	Yes	Yes	Yes	Potential for biodiversity uplift
77	Harnham C of E Junior and Infant School	Education	5-12	High	Good	Yes	Yes	Yes	Potential for biodiversity uplift
78	West Harnham Chalk Pit SSSI	Natural Green Space (Limited Access)	Mixed	Medium	Very poor	No	-	Yes	SSSI for Geological Importance. Used by BMX bikers & for adventure play. Litter clearance required

**Figure 53. Schedule of Open Space Provision by Type in Salisbury (cont.)**

Number	Site Name	Typology	Age Range(s)	Usage	Quality	Evidence of maintenance?	Improvement Required?	Does it meet local need?	Comments/Issues
79	Salisbury Bowling Club	Outdoor Sport (Private)	18+	High	Good	Yes	No	Yes	
80	St Osmund's Catholic Primary School	Education	5-12	High	Good	Yes	No	Yes	Potential for biodiversity uplift
81	Exeter House Special School	Education	Mixed	High	Good	Yes	No	Yes	Potential for biodiversity uplift
82	St Mark's C of E Junior School	Education	5-12	High	Good	Yes	No	Yes	Potential for biodiversity uplift
83	Bishop Wordsworth's School Playing Fields	Education	12-18	High	Good	Yes	No	Yes	Potential for biodiversity uplift
84	Ashley Road/Maltings Riverside Footpath/Cycleway	Accessible Natural Green Space	All	High	Poor -Adequate	Yes	Yes	Yes	Parts of heavily used footpath and cycleway require urgent upgrade
85	Andrews Way Open Space	Amenity Green Space	All	Medium	Adequate	Yes	Yes	Yes	Potential for biodiversity uplift
86	Bemerton St John C of E Primary School	Education	5-12	High	Good	Yes	No	Yes	Potential for biodiversity uplift
87	Stratford-sub-Castle Primary School	Education	5-12	High	Good	Yes	Yes	Yes	Potential for biodiversity uplift
88	Old Sarum SM	Accessible Natural Green Space	All	High	Good	Yes	Yes	Yes	Potential for biodiversity uplift
89	Old Sarum Norman Castle SM	Natural Green Space (Limited Access)	All	High	Good	Yes	No	Yes	
90	St Lawrence's Church	Churchyards and Cemeteries	All	Medium	Good	Yes	Yes	Yes	Potential for biodiversity uplift
91	Salisbury Rugby Football Club	Outdoor Sport (Private)	Mixed	Medium	Good	Yes	No	Yes	



**Figure 53. Schedule of Open Space Provision by Type in Salisbury (cont.)**

Number	Site Name	Typology	Age Range(s)	Usage	Quality	Evidence of maintenance?	Improvement Required?	Does it meet local need?	Comments/Issues
92	Riverside Tennis Club	Outdoor Sport (Private)	All	High	Good	Yes	No	Yes	Recently extended
93	Sarum St Paul's C Of E Primary School	Education	5-12	High	Good	Yes	Yes	Yes	Potential for biodiversity uplift
94	St Paul's Church	Churchyards and Cemeteries	All	Medium	Good	Yes	Yes	Yes	Potential for biodiversity uplift
95	Manor Fields Primary School	Education	5-12	High	Good	Yes	Yes	Yes	Potential for biodiversity uplift
96	South Wilts Grammar School	Education	12-18	High	Good	Yes	Yes	Yes	Potential for native boundary hedgerow planting
97	Five Rivers Leisure Centre	Amenity Green Space	All	High	Adequate	Yes	Yes	Yes	Potential for higher levels of maintenance
98	Five Rivers Leisure Centre Sports Pitches	Outdoor Sport (Private)	18+	Medium	Good	No	Yes	Yes	
99	Nadder Island	Natural Green Space (Limited Access)	All	Low	Adequate	Yes	Yes	Yes	Potential for greater control of invasive species
100	St Gregory and The English Martyrs Catholic Church	Churchyards and Cemeteries	All	Medium	Adequate	Yes	Yes	Yes	Potential for biodiversity uplift
101	Salisbury and South Wilts Sports Club	Outdoor Sport (Private)	All	High	Good	Yes	Yes	Yes	Potential for native boundary hedgerow planting
102	Salisbury Golf Centre	Outdoor Sport (Private)	All	High	Good	Yes	Yes	Yes	Potential for native boundary hedgerow planting & more informal grassland management
103	Harlequin Football Ground	Outdoor Sport (Private)	Mixed	Medium	Good	Yes	Yes	Yes	Replacement of conifer screen with mix of native tree and hedgerow planting in due course

**Figure 53. Schedule of Open Space Provision by Type in Salisbury (cont.)**

Number	Site Name	Typology	Age Range(s)	Usage	Quality	Evidence of maintenance?	Improvement Required?	Does it meet local need?	Comments/Issues
104	Salisbury Elim Church	Churchyards and Cemeteries	All	Medium	Adequate	Yes	Yes	Yes	Potential for biodiversity uplift
105	Bemerton Methodist Church	Churchyards and Cemeteries	All	Medium	Adequate	Yes	Yes	Yes	Potential for biodiversity uplift
106	Chafyn Grove School	Education	5-12	High	Good	No	Yes	Yes	Potential for biodiversity uplift
107	St Mark's Church	Churchyards and Cemeteries	All	Medium	Good	Yes	Yes	Yes	Potential for biodiversity uplift
108	Avon Valley Local Nature Reserve (The Butts, Left Bank)	Accessible Natural Green Space	All	High	Good	Yes	Yes	Yes	Management Plan requires review and update
109	Stratford-sub-Castle Nature Reserve	Accessible Natural Green Space	All	High	Adequate	No	Yes	Yes	Management Plan required
110	Pembroke Park Primary School	Education	5-12	High	Good	Yes	No	Yes	Potential for biodiversity uplift
111	Harnham Water Meadows Part SSSI and CWS	Natural Green Space (Limited Access)	All	High	Good	Yes	Yes	Yes	Managed by Charitable Trust Potential for biodiversity uplift
112	St George's Church	Churchyards and Cemeteries	All	Medium	Adequate	Yes	Yes	Yes	Potential for biodiversity uplift
113	Harnham Folly Woodland TPO	Natural Green Space (Limited Access)	-	Low	Very poor	No	Yes	Yes	Woodland management urgently required
114	Sarum Academy	Education	12-18	High	Good	Yes	Yes	Yes	Potential for biodiversity uplift
115	Sarum Academy	Amenity Green Space	All	Low	Poor	No	Yes	Yes	Management Plan required

**Figure 53. Schedule of Open Space Provision by Type in Salisbury (cont.)**

Number	Site Name	Typology	Age Range(s)	Usage	Quality	Evidence of maintenance?	Improvement Required?	Does it meet local need?	Comments/Issues
116	St Peter's CE Primary School	Education	5-12	High	Good	Yes	Yes	Yes	Potential for biodiversity uplift
117	St Peter's Place Open Space	Park and Recreation Ground	All	-	-	-	-	-	Under construction
118	St Michael's Road Open Space	Accessible Natural Green Space	All	Low	Poor	Yes	Yes	Yes	Management Plan required for scrub woodland
119	The Valley Open Space	Accessible Natural Green Space	All	Low	Poor	No	Yes	Yes	Management Plan required for scrub woodland
120	The Valley Open Space	Amenity Green Space	All	Medium	Adequate	Yes	Yes	Yes	Different grass cutting regimes could be introduced to favour biodiversity
121	St Michael's Church and Community Centre	Churchyards and Cemeteries	All	High	Adequate	Yes	Yes	Yes	Potential for biodiversity uplift
122	Woodlands Primary School	Education	5-12	High	Good	Yes	Yes	Yes	Potential for biodiversity uplift
123	Wagstaff Way Open Space	Accessible Natural Green Space	All	Medium	Adequate	Yes	Yes	Yes	Scrub woodland in need of management
124	All Saints' Church	Churchyards and Cemeteries	All	Medium	Good	Yes	No	Yes	

**Figure 53. Schedule of Open Space Provision by Type in Salisbury (cont.)**

Number	Site Name	Typology	Age Range(s)	Usage	Quality	Evidence of maintenance?	Improvement Required?	Does it meet local need?	Comments/Issues
125	Stratford Mill Woodland Belt	Natural Green Space (Limited Access)	All	High	Average	Yes	Yes	Yes	Provides setting for River Avon Footpath (SALS 9 ROW)
126	Montgomery Gardens Open Space (TPO)	Amenity Green Space	All	High	Average	Yes	Yes	Yes	Potential for small general improvements and biodiversity uplift
127	Essex Square Open Space	Amenity Green Space	All	High	Average	Yes	Yes	Yes	Potential for small general improvements
128	Wiltshire Road Open Space	Amenity Green Space	All	Medium	Average	Yes	Yes	Yes	Potential for small general improvements and biodiversity uplift
129	Woodbury Gardens/Senior Drive Open Space	Amenity Green Space	All	High	Good	Yes	Yes	Yes	Potential for small general improvements and biodiversity uplift
130	Manor Farm Meadows	Natural Green Space (Limited Access)	All	Limited	Good	Yes	Yes	Yes	Potential to be part of River Bourne Valley Park
131	Bingham Road Open Space	Accessible Natural Green Space	All	High	Average	Yes	Yes	Yes	Essential link with Castle Hill Country Park

# Appendix 4: Health care facilities by ward

	Primary Care	Secondary and Community	Services for the elderly and vulnerable
Bemerton Heath			
Fisherton and Bemerton Village	Bemerton Heath Surgery	Sarum Physiotherapy Centre St John Ambulance First Aid Training Salisbury	Cognatum Retirement Property: Bemerton Farm Estate
Harnham West			Harnham Croft Care Home
Harnham East			Vulnerable services OSJCT Willowcroft (Assisted living residence) Holmhurst (Assisted living residence)
St Edmund's	Harcourt Medical Centre Dr Jane Rustom Stone Dr J Salisbury Courtyard Clinic Three Chequers Medical Practice - Three Swans Surgery Salisbury Walk-In Health Centre Millstream Medical Centre	Total Foot Health Lifestyle Medical Beauty Clinic Gentle Dental Salisbury Orthodontics Ltd	SCC Shop mobility
Milford Ward			Inwood House (assisted living) Maristow House (nursing home) Tower House (assisted living) Boldre House (assisted living) Exeter House Special School Laverstock Care Centre (nursing home) Wessex Care - Milford Manor (nursing home) Wessex Care – Little Manor (nursing home) Wessex Care – Kimberley West (nursing home) Wessex Care – Kimberley East (nursing home)
St Francis and Stratford			
St Paul's	Salisbury Medical Practice		OSJCT Bemerton Lodge (Assisted living residence) Clarendon House (Assisted living residence) Gracewell Of Salisbury (Assisted living residence) Fountain Way Westwood House (sheltered housing) Spring Court (retirement housing) There are a number of assisted living homes

# Appendix 5: Community infrastructure by ward

	Religious and church based	Sports and recreation	Community services
Bemerton Heath	St. Michael's Church café St. Michael's Church Hall Rise 61 church-based youth group – bike repair hub, community garden, outside activities.	Bemerton Heath Harlequins sports and social club used for various sports and non-sport related community activities and as a meeting and events place. Harlequins park play area Westwood Road play area Pinewood Way play area Fugglestone Red, Cooks close play area Bemerton Folly (woods) Bemerton Allotments Other large grass areas between The Valley and Devizes Road St. Peter's Place	Trussell Trust Community fridge SCC-owned Bemerton Heath Neighbourhood Centre SCC-owned Bemerton Heath Meeting rooms St. Peter's Place Academy for community uses – St Peter's CE Primary Academy
Fisherton and Bemerton Village	St Gregory and The English Martyrs Catholic Church Bemerton Methodist Plymouth Brethren Church St Andrew's Church	Lower Bemerton Play Area Salisbury Golf Centre Salisbury and South Wilts Sports Club	St John's Place Lower Bemerton Working Mens Club
Harnham West	St George's Church St George and All Saints C Of E Church	Salisbury Tennis Club Harnham Community Sports and Social Club Harnham Cricket Pitch West Harnham Chalk Pit Tut woods Salisbury town path Middle St football pitch	Old Mill Hotel 4th Salisbury (Harnham) Scouts Harnham Parish Hall
Harnham East	Seventh-day Adventist Church Salisbury Cathedral/ refectory	Cathedral close Churchill Gardens	SCC Friary Community Centre The Salisbury Museum /café The Medieval Hall
St Edmund's	St Thomas's Church United Reformed Church Salisbury Methodist Church Salvation Army Salisbury Baptist Church	Wyndham Park	Salisbury Arts Centre

	Religious and church based	Sports and recreation	Community services
Milford Ward	St Martin's Church Salisbury Vineyard Church St Mark's Church Bishopdown Evangelical Church Holy Redeemer Catholic Church	Outburst PureGym Godolphin School Parkwood Health and Fitness	
St Francis and Stratford	St Francis Church St Lawrence Church	Victoria Park Community Tennis Salisbury Bowling Club Salisbury Rugby Club The Butts Allotments Stratford Road Allotments Salisbury Camping and Caravanning Club Site Victoria Park football pitch and play park Pantry Partnership, Victoria Park Hudson's Field Castle Hill Country Park Avon Valley Nature Reserve Old Sarum – English Heritage	Reading Room / Stratford Cafes Stratford Social Club
St Paul's	Salisbury Mosque Quakers Religious Society Of Friends St Paul's Church Emmanuel Church	Basketball Court Riverside Tennis Club Fisherton Farm Allotment Site Ashley Road Play Park Five Rivers Leisure Centre Susan Stephenson Yoga Macklin Road play park Jay Rise play park Montgomery Gardens play park	Scout Hall in Dennis Marsh House

## Club assets within the community

Name of Club	Sport	Provision	Location
Salisbury Athletic and Running Club	Athletics	Salisbury Parkrun, Mixed ages, Sarum Sisters runnings	Churchfields, Five Rivers
Salisbury Hockey	Hockey	12 adult sessions (6 Ladies), 9 youth	SWCC Bemerton
Salisbury RFC	Rugby	3 mens, 1 Womens, Girls, Junours	Hudson Field
Aspire martial Arts	Martial arts	Monday, Wednesday, Thursday, Friday, Saturady, All ages	Sarum, Five rives, Victoria park
Reds Netball	Netball	U10,U12/13,U14, Team Strom, Team thunder	Chafyn grove School
South Wilts Ramblers	Walking	1 hour walk weekly, 1.5 hour walk weekly, all on Thursdays at various city locations 1 30 min walk last Thursday of month	Various city locations (Five Rivers, Close, Britford etc.)
Live Well	Mixed	Over 50s sport ane recreational club (Wiltshire Council)	Five Rivers
Clarendon FC	Football	U7, U10,U12's x2,U16, mens teams	Barrys Field Winterslow Sarum
Walking Football	Football	Over 50s – 4 weekly sessions	Five Rivers and Wilton Road
Walking Netball	Netball	Over 50s – 1 session	Five Rivers
Walking Rugby	Rugby	Over 50s – 1 session	Five Rivers
Salisbury Rovers	Football	Childrens ages 8-14	Five Rivers, Friary
Sarum Road and Mountain Cycling Club	Cycling	Mondays, Tuesdays, Wednesday and Thursdays	Five rivers
Victoria Park Tennis	Tennis	Open provision, hoiday camps a matches	Victoria park
Salisbury Fencing Club	Fencing	Wednesdays	Sarum academy
Sarum FC	Football	First team, developmental team, Womens, Walking football and Youth football	Sarum, Cattlemarket
Salisbury Marauders	Amarican Football	Youh 13-16 and adult 16+	Barrys field
Aikido	Martial arts	Tuesday, Thursday and Saturday	Hyde Fording



## Club assets within the community

Name of Club	Sport	Provision	Location
Salisbury Volleyball	Volleyball	Thursdays Celts/Beginners/Juniors: 19:30 - 20:30 Warlocks Focused Session: 20:30 - 21:30 Pagans Focussed Session: 21:30 - 22:30	Godolphin
Salisbury Swans	Netball	Womens Mondays Thursdays 5:30	Five rivers
Netball Blue-jays	Netball	High Fives ( yr4,5&6) 7-8pm U12,U13&U14 (yr7,8&9) 7-8pm U15,U16&U17 (yr 10,11&12) 8-9pm, U18 / Adults 8-9pm	Five Rivers, Sarum
Fiver Rivers Bowls	Bowls	Juniors, 4.30-6.30 Seniors 9-22:00	Tollgate Road
South Wilts Cricket Club	Cricket	Mens,Boys and girls u9,u11,u13,u15 Womens	SWCC Wilton Road
Hamptworth Croquet	Croquet	Monday afternoon, Tuesday evening, Wednesday afternoon, Thursday morning	Hamptworth
Salisbury Stingrays	Swimming	Polo, competitive swimming for adluts and Juniors	Five rivers, Godolphin
Salisbury Golf Club	Golf	Open for bookings for members and nonmembers	Salisbury golf club
Salisbury tri club	Triathlon	Coached Virtual Turbo – Monday 7-8pm Coached swimming – First 3 Tuesdays each month. 8-15-9-15pm at Goldophin School Coached running – Thursday 6.45-8pm from Five Rivers Leisure Centre Cycle – Saturdays 9amFive Rivers Leisure Centre	Godolphin and Five Rivers
Christey-Clover Golf academy	Golf	Wednesdays 4pm-5pm & 5pm-6pm, Saturdays 9.30-10.30, 10.30-11.30 & 11.30-12.30pm, Sundays 9.30-10.30, 10.30-11.30 & 11.30- 12.30pm	Wilton road Golf Academy
Harnham Cricket	Cricket	Tursdays Softball youth, Hardball youth, Womens and over 50's	Harnham Cricket Pitch, trafalger and five rivers
Sarum Dodgeball	Dodgeball	Tuedays 5-6pm Youths	Sarum Academy
PAN Disability Football (disability provision)	Football	Salisbury Tigers (Adults) 12-16 age range (SCC)	SWCC Wilton Rd Sarum Academy
Sarum Badminton Club Salisbury	Badminton	Thursdays 8-10 all ages	Sarum Academy

## Club assets within the community

Name of Club	Sport	Provision	Location
Boxing Club	Boxing	Monday 19:00 - 21:00 Seniors Tuesday 18:00 - 19:00 Juniors Wednesday 19:00 - 21:00 Seniors Thursday 18:00 - 19:00 Juniors Friday 19:00 - 21:00 Seniors	Churchfields due to close
Salisbury Sun Risers	Football		Harnham Recreational pitch
Village Freehouse	Cricket	Community Cricket (non-affiliated) – 1 adults team	Harnham Cricket Pitch
Riverside Tennis Club	Tennis	Open courts, juniours and senior, paddle	Devizes road
Salisbury Tennis Club	Tennis	Members and non-members open tennis available, league tennis	
Malaysian Cricket Team	Cricket		Harnham Cricket Pitch
Suns Basketball	Basketball	open to new players (16 and over), Mondays - 8:30pm - 10:30pm Thursdays - 8:30pm - 10:00pm	Bishops Wordsworth
Rising stars and fit club (disability provision)	Mixed	Mixed multishport for children and adults with additional needs	Five Rivers
Salisbury Archery club	Archery		Downton
Zumba	Fitness	Fitness and dance class for women	Harnham Jr School
Inspire Gymnastics	Gymnastics	Tuesdays, Wensdays	St Edmunds, Sarum
Salisbury canoe club	Watersports	Tuesday (open) Wednesday and Thursday members	Churchfields Clubhouse
West Harnham Netball Club	Netball	Fridays	Chafyn grove







