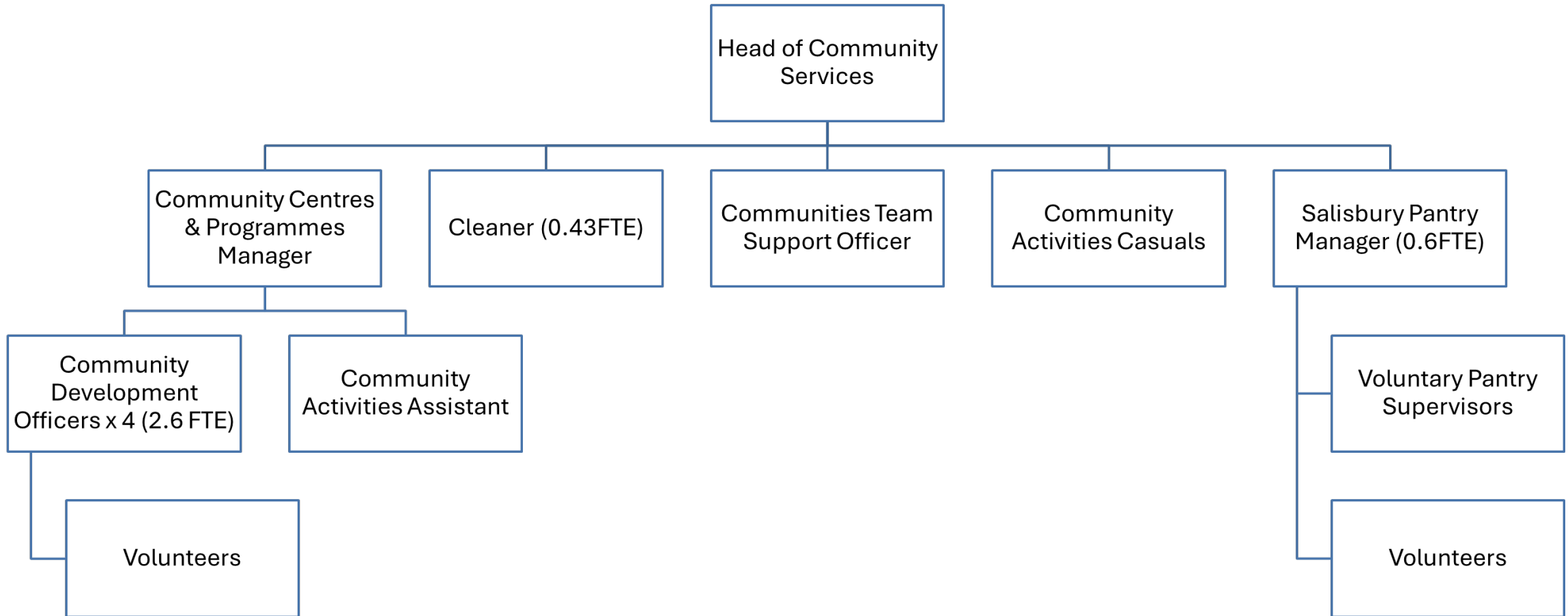


COMMUNITY SERVICE UPDATE

June 2024



Community Services



COME AND HAVE A
CHAT ABOUT

IMPROVING YOUR COMMUNITY GARDEN

THURSDAY 6TH JUNE AT 7PM
THE FRIARY COMMUNITY CENTRE-114 CARMELLITE WAY
CONTACT HANNAH- 07742 751262

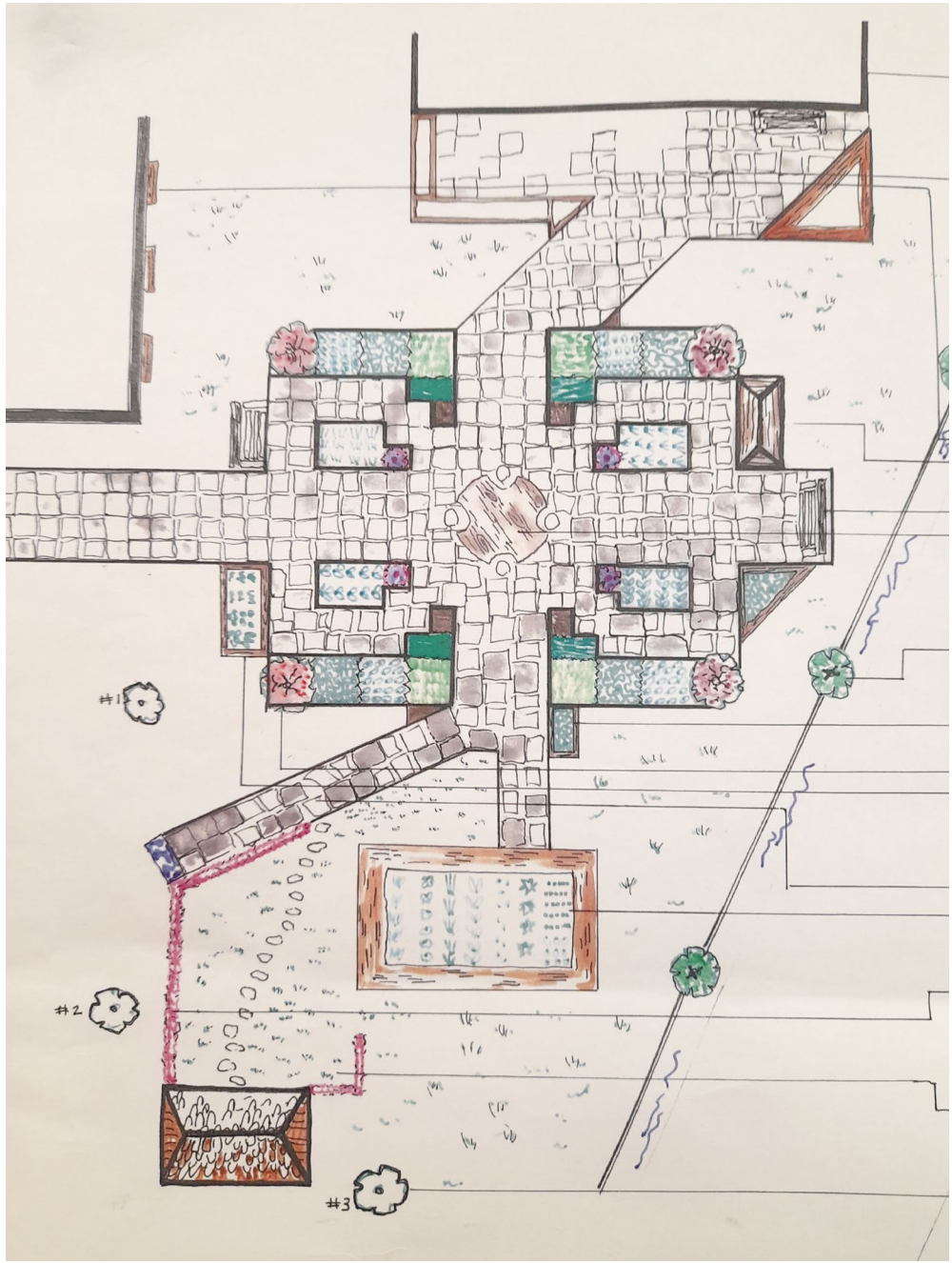


FRIARY GARDEN PROJECT

- **Designs** - Becky Twigg - Kingdom of Sticks (Community Garden Planning)
- **Consultation & engagement** - 6th June
- **Consulting** with Wiltshire Council
- **Interest** from
 - Exeter House Vocational Centre
 - Fijian Church Group - (Maintenance)
- **Planning groups**
 - Monday Club
 - Hangout
 - Resident Family group (New)

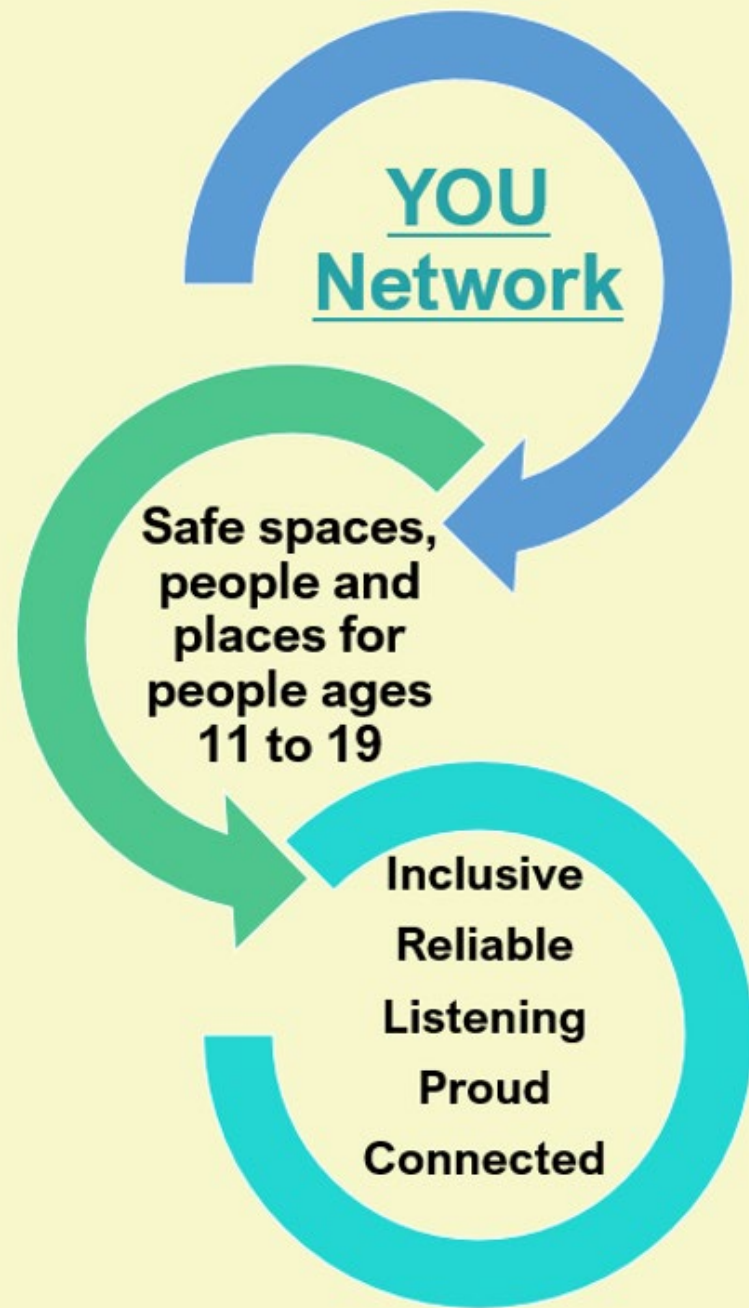
Grant funding options

- Wessex Water
- Area Board Capital
- Resident improvement grants



FRIARY GARDEN PROJECT

- Raised beds and pathways for access
- Low maintenance beds for year-round impact
- Seating areas for community use
- Expanding the use of the centre during summer months
- Residents involved in the planning stage and the funding applications



YOU NETWORK

A Network of safe spaces and services for young people in Salisbury

- Peer support to improve learning and confidence
- Visibility and awareness raising
- The promotion of share values
- Celebrating Young People
- Supporting new groups and spaces

Oversight - Youth provision forum steering group of 6

Administration - SCC Youth Officer

YOU NETWORK VALUES

- Come as YOU are
- Here for YOU
- Hearing what YOU have to say
- Celebrating YOU
- Better together for YOU

5 Principles

Everyone in this network can say,
'We are ...'

| | |
|------------------|--|
| Inclusive | <p>Come as YOU are.</p> <p>Everyone is welcome regardless of gender, sexuality, gender identity, religion, or culture. The only criteria for entry into spaces or services can be age, or geographical location. Access and individual needs are considered, and adjustments made wherever possible to create a space of safety. Difference is celebrated in both small and big ways.</p> |
| Reliable | <p>Here for YOU.</p> <p>Members of the network work hard to provide a consistent or reliable safe space by either having regular or clearly communicated dates and opening times, operating in the same places or having a clear identity that young people know they can trust.</p> |
| Listening | <p>Hearing what YOU have to say.</p> <p>We place listening to young people at the heart of our work, one-to one, in groups, formally and informally, we actively seek their feedback and input into how a space or service operates. We give young people a voice and enable them to shape outcomes.</p> |
| Proud | <p>Celebrating YOU.</p> <p>Through the YOU network, and our youth provision forum partners, we actively share positive news stories about, by and for young people in and around Salisbury, supporting Young People to share who they are.</p> |
| Connected | <p>Better together for YOU.</p> <p>We all agree that working together, sharing ideas and experiences will help us to create better, more resilient offer for young people to enjoy safely. We signpost to and promote each other's work.</p> |

How you make your space a safe place beyond and within these principles is up to you but should be rooted in feedback and input from the young people you work with.

- Supervised spaces for young people to socialise on a drop-in or membership basis.

Youth Clubs & Informal Spaces



Detached youth work in public places OR youth zones or pop ups within community and public events.

Public Places



- Clubs, groups, teams and course providers of (typically) 'paid for' activity, outside school or college.

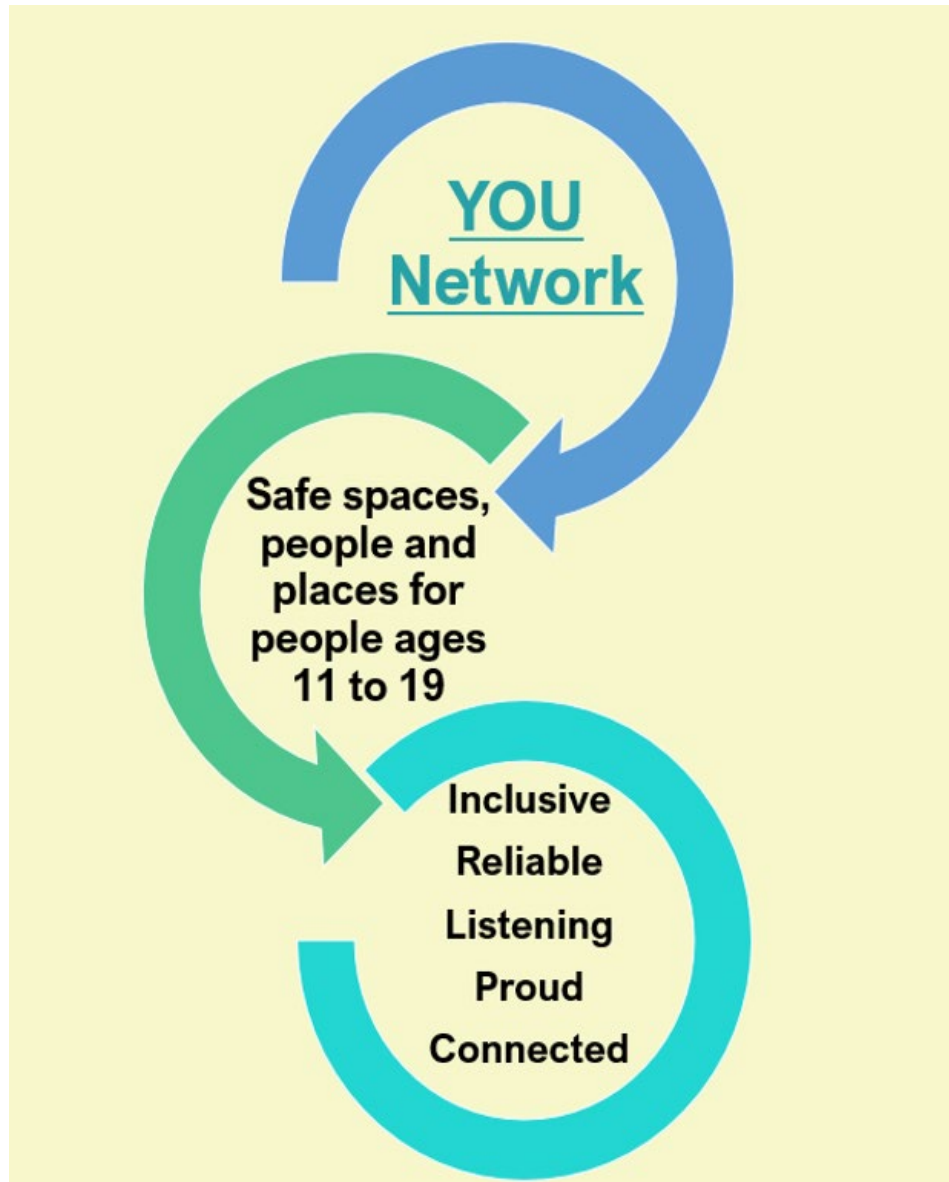
Activity Providers



YOU NETWORK SCOPE

- Salisbury city boundary delivery area
- Including a range of settings
- Expanded via Parish Partners
- Monitored by drop in visits
- Meeting bi-annually

Expressions of Interest- Impact MMA, Salisbury Rigby Club, Hangout, Bishopdown Youth Cub, Community Circus events, Safer Streets Team, Salisbury Hockey, Mencap, St Francis Church, RISE 61



YOU NETWORK

- Press Release - Mid July
- Expressions of Interest - July/Aug
- Interest Meeting Online - Sept
- Formal applications - Sept/Oct
- 1st Members Meeting - Nov
- Launch - Jan 2025
- Drop in visits - Jan - March
- 1st Skills Share or Training - Mar/April 2025
- Market square event - Easter 2025

ADULTS AND OLDER PEOPLE



2nd April - Mini craft - Easter Egg raffle

9th April - Board Games

16th April Patch Making

23rd April - Glass Art Workshop

7th May - Board Games

28th May - Kaleidoscope Craft

4th June - Board Games

18th June - Fun Day prep/craft

2nd July - Board Games

16th July - Fun Day pre/craft

Kaleidoscope Group - Applying for Bright ideas funding for a community kiln for Bemerton heath

Bemerton Lunch Club - running since Feb 2024. Now at capacity and exploring expansion with Harlequins

Community Trip to Beaulieu - connecting our A & OP groups and growing social capital

Community Café - full member-led activity programme and involvement in Fundays

ACTIVE LIFESTYLES

Kids Love Fit - Healthy Little Monsters - Expanded to 2 sessions per week at the Bemerton Centre

Ramblers Wellbeing Walks - Victoria Park walk now established

Future of Ability Counts - secured for a further year through partnership with Tigers adult provision and support from Mencap and Salisbury FC

Impact MMA - Expanded to include Sundays at Bemerton Heath



Kidzlovefit

29 May at 07:56 · 🌐

Happy Little Monsters - June courses -

BOOKINGS 💜 OPEN

Join Kizzy our mindful monster, Louie our moving monster & Frankie our munching monster on a fun active adventure each week

On completing our 6wk course you get to take home your very own personalised & exclusive 'Fun Food Plate' & BPA free water bottle so all your happy healthy habits can continue on...

Get in touch to book!



PANTRY



Volunteers Needed

Wednesday Shop Volunteers

Help us to open every Wednesday evening, instead of every other.

Serve our members, helping people to shop if they need it

Build relationships with members and make everyone feel welcome

Stock shelves and keep our shop tidy and hygienic

salisburypantry@salisburycitycouncil.gov.uk
01722 417100



Development and Campaigns

- Big Help Out - 8th June
- Volunteer Campaign
- Partnership meeting Early July
- Exploring options to expand Wednesday opening to every week by the summer

Member and user numbers stabilised in Feb - June 2024

PEOPLE-LED PROJECTS

BU - LGBTQ+ Youth Group (16 - 19)

- 10 members
- Self-named & member designed Logo
- People in the Park - over 200 engagements
- 1 follow ups through QR code
- Third in STC peoples vote for funding
- Community-Led steering group

11 - 15 research via Schools

- Developing a support package for schools around Respect/Language and Safe Space Creation
- Pastoral lead at Bishops Wordsworth reviewing Proposal
- Trafalgar and Sarum Academy Meetings this month



LGBTQIA+ YOUTH



SAFER AND SUPPORTIVE SALISBURY

- SCC Rent Reduction
- Maximize community impact of 59 Catherine Street
- Community Information Point
- Part of the successful bid for £120,000 from National Lottery



FRIARY YOUNG ARTISTS EXHIBITION

Culmination of an 8 month project led by Salisbury Museum

- 6 young artists
- Exploring ideas around "Our Future Salisbury"
- Interest from a further 4 residents (current non-engagers)
- 'quiet creative club' planned from Sept
- Staffed by Museum staff for the duration of their HLF project



SUMMER 2024



We Love Where We Live

- 27th July - Harnham
- 29th July - Bishopdown
- 1st Aug - Bemerton
- 17th Aug - Friary

FUEL Programme Support

Community Picnics

Garden Project Work

One-off youth-led Youth Club
events

