



Organisation Chart



A sense of team

There are six key departments within Salisbury City Council. Each of them are key to the support of, or, the direct delivery of services to our residents, businesses and visitors. The areas covered are as follows:

- **Finance:** Ensures that we run a Council that spends only what it needs to
- **Business and Communications:** Make sure our markets thrive, put on events for our city, delivers good customer service at our Tourist Information Centre, offer accessible options through our Shop Mobility, operates our Guildhall and communicates for our Council
- **HR:** Working with employees and managers to align people with the Council's objectives including recruitment, development and payroll
- **Corporate:** Provides the governance and management support across the Council
- **Environment:** Keep our parks green, our streets clean, run our crematorium, maintain our buildings and operate our CCTV network
- **Communities:** Works with our residents to provide a range of activities and services to support their everyday lives and well-being

There are currently around 95 members of our teams.

Senior Management Team



Asa Thorpe
Chief Executive Officer



Tracy Adams
Head of Human
Resources



Steve Bishop
Responsible Finance
Officer



Sarah Gregson
Head of Communities



Marc Read
Head of Environmental
Services

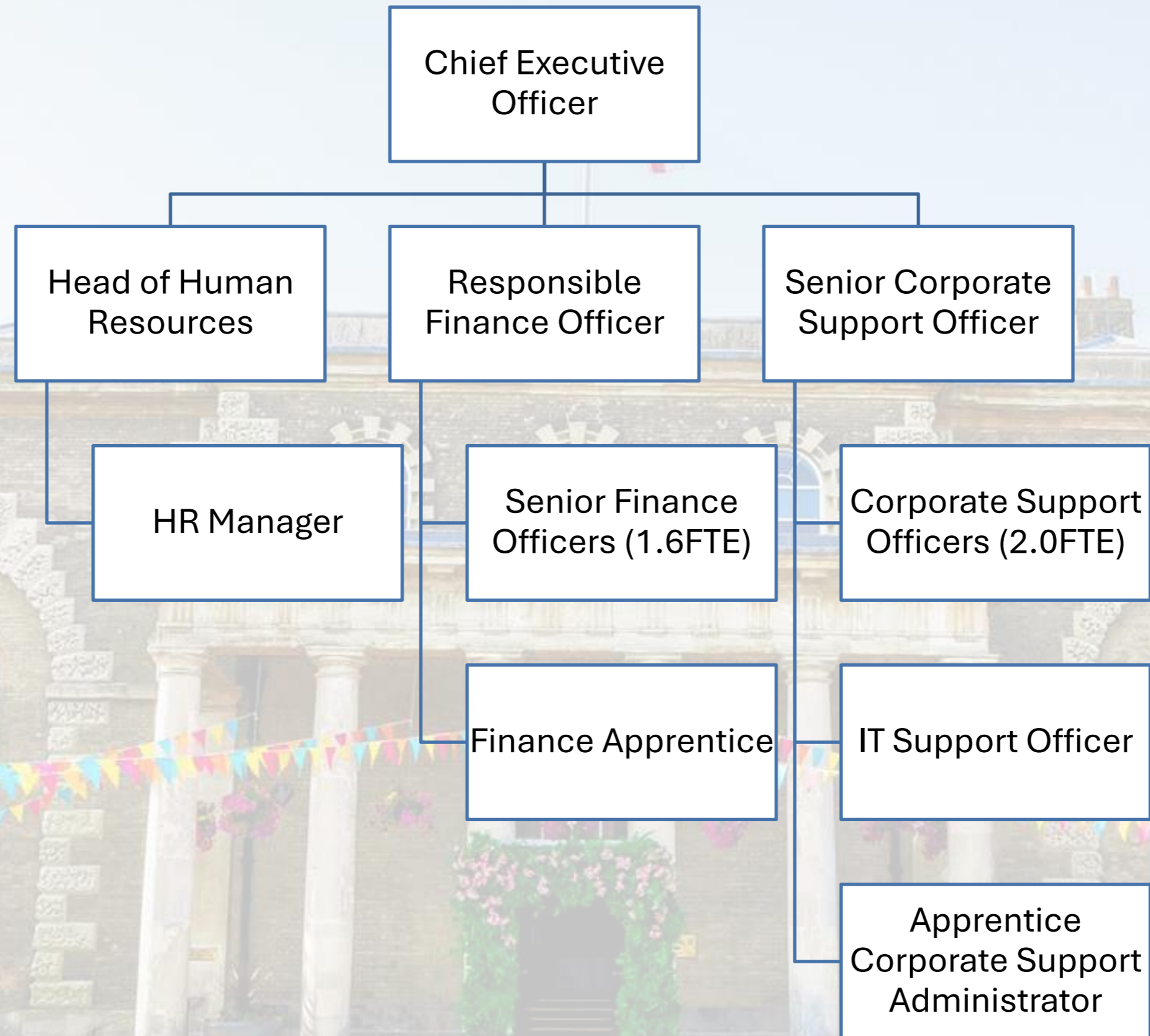


Janine Whitty
Head of Corporate
Services
(Maternity Leave)

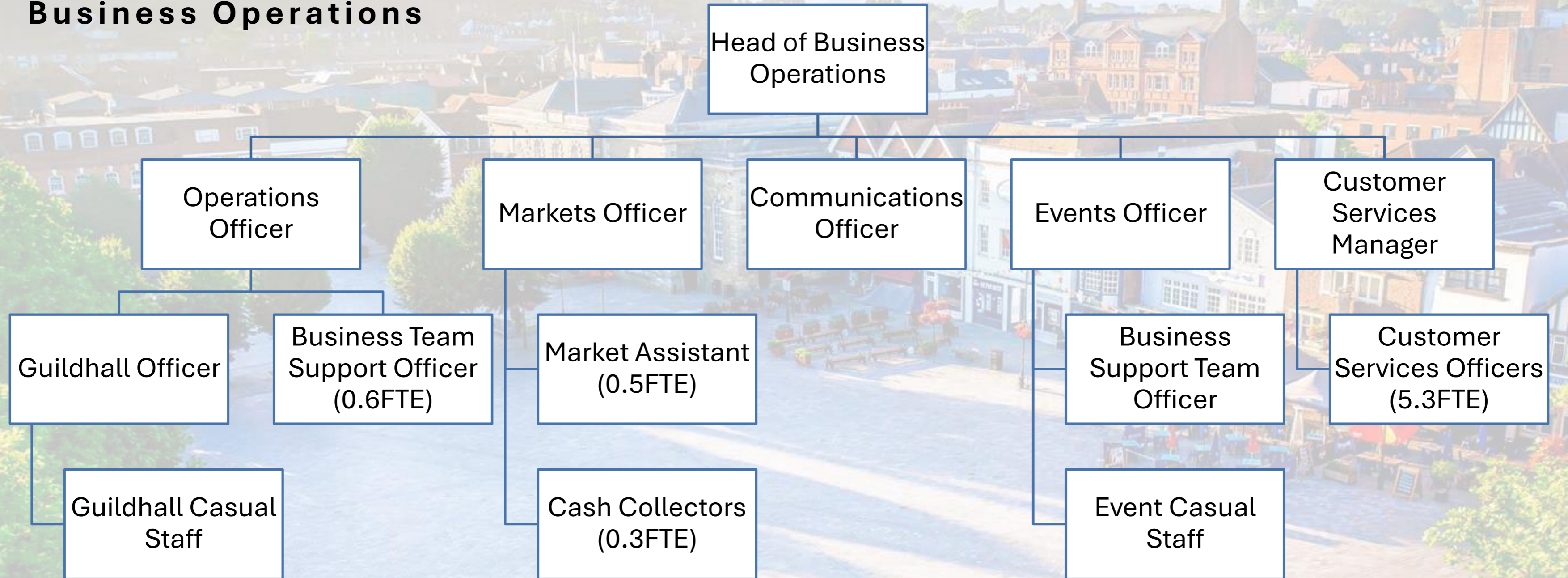


Matthew Hine
Head of Business
Operations

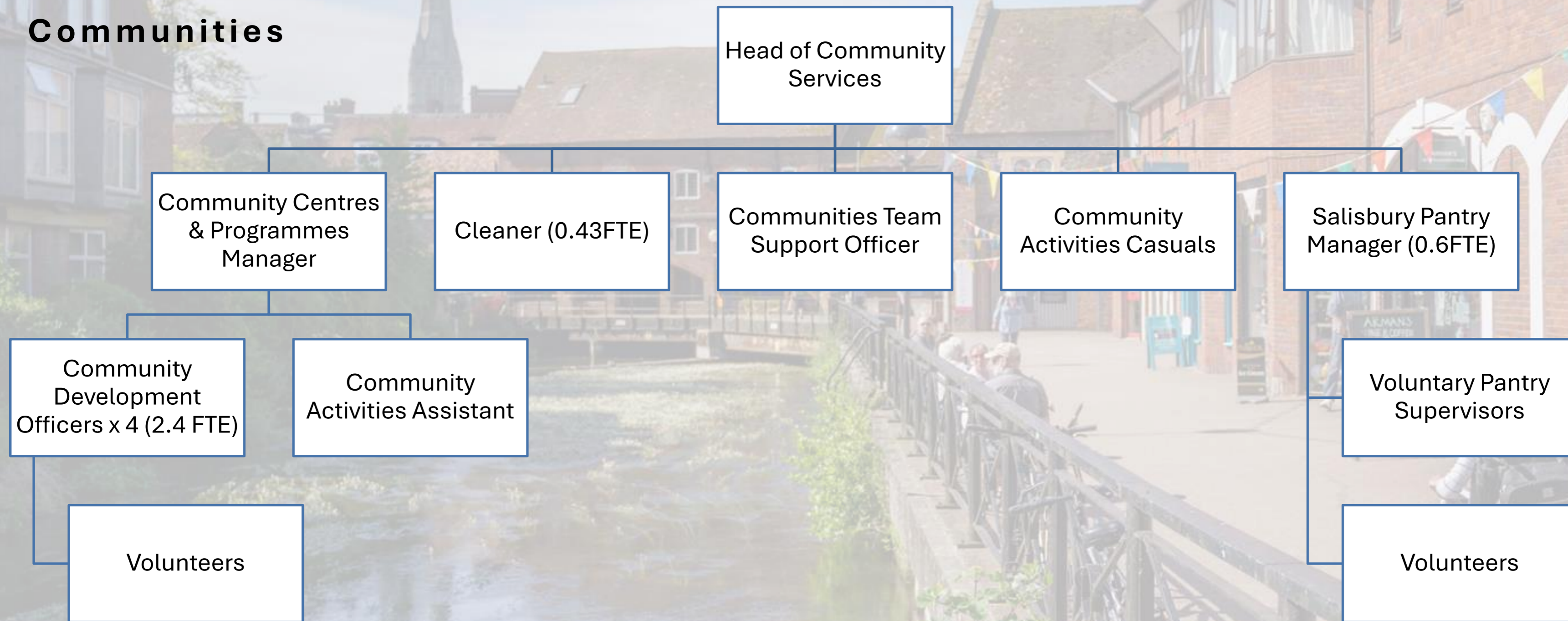
Chief Executive



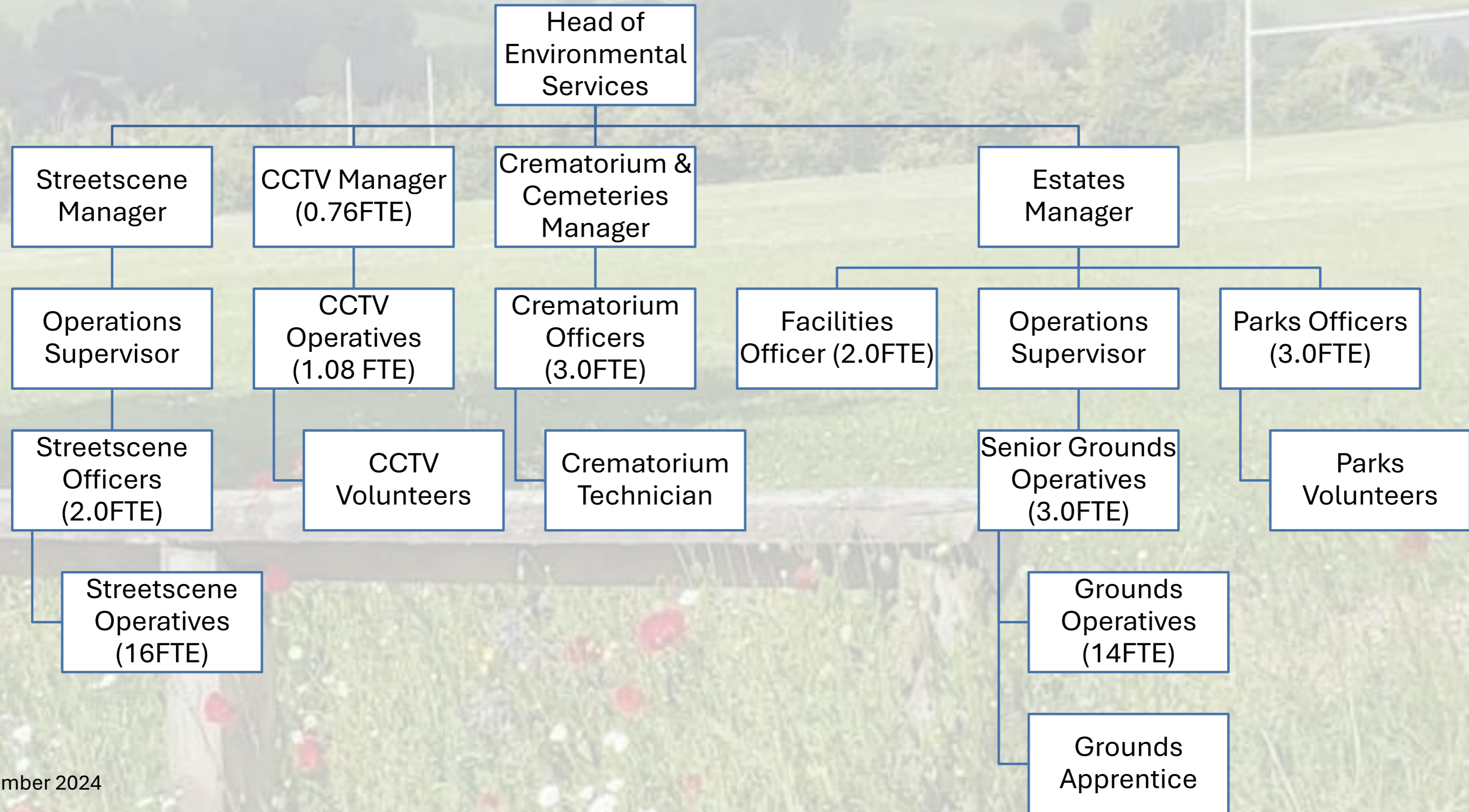
Business Operations



Communities



Environmental Services



Thank you

Human Resources & Payroll
HR@salisburycitycouncil.gov.uk