



# Organisation Chart





# A sense of team

There are six key departments within Salisbury City Council. Each of them are key to the support of, or, the direct delivery of services to our residents, businesses and visitors. The areas covered are as follows:

- **Finance:** Ensures that we run a Council that spends only what it needs to
- **Business and Communications:** Make sure our markets thrive, put on events for our city, delivers good customer service at our Tourist Information Centre, offer accessible options through our Shop Mobility, operates our Guildhall and communicates for our Council
- **HR:** Working with employees and managers to align people with the Council's objectives including recruitment, development and payroll
- **Corporate:** Provides the governance and management support across the Council
- **Environment:** Keep our parks green, our streets clean, run our crematorium, maintain our buildings and operate our CCTV network
- **Communities:** Works with our residents to provide a range of activities and services to support their everyday lives and well-being

There are currently around 95 members of our teams.



# Senior Management Team



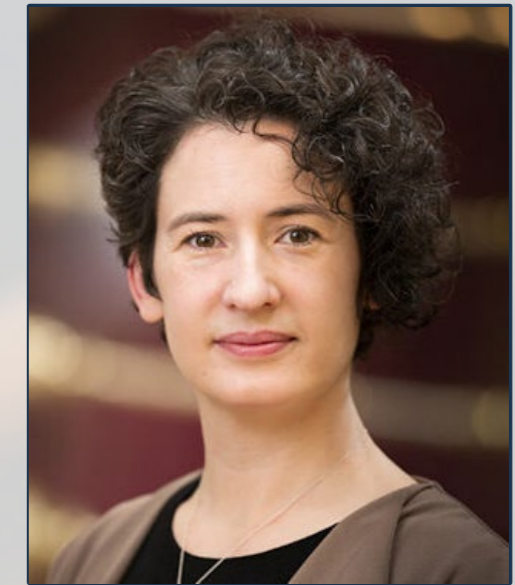
**Asa Thorpe**  
Chief Executive Officer



**Tracy Adams**  
Head of Human Resources



**Steve Bishop**  
Responsible Finance Officer



**Sarah Gregson**  
Head of Communities



**Marc Read**  
Head of Environmental Services



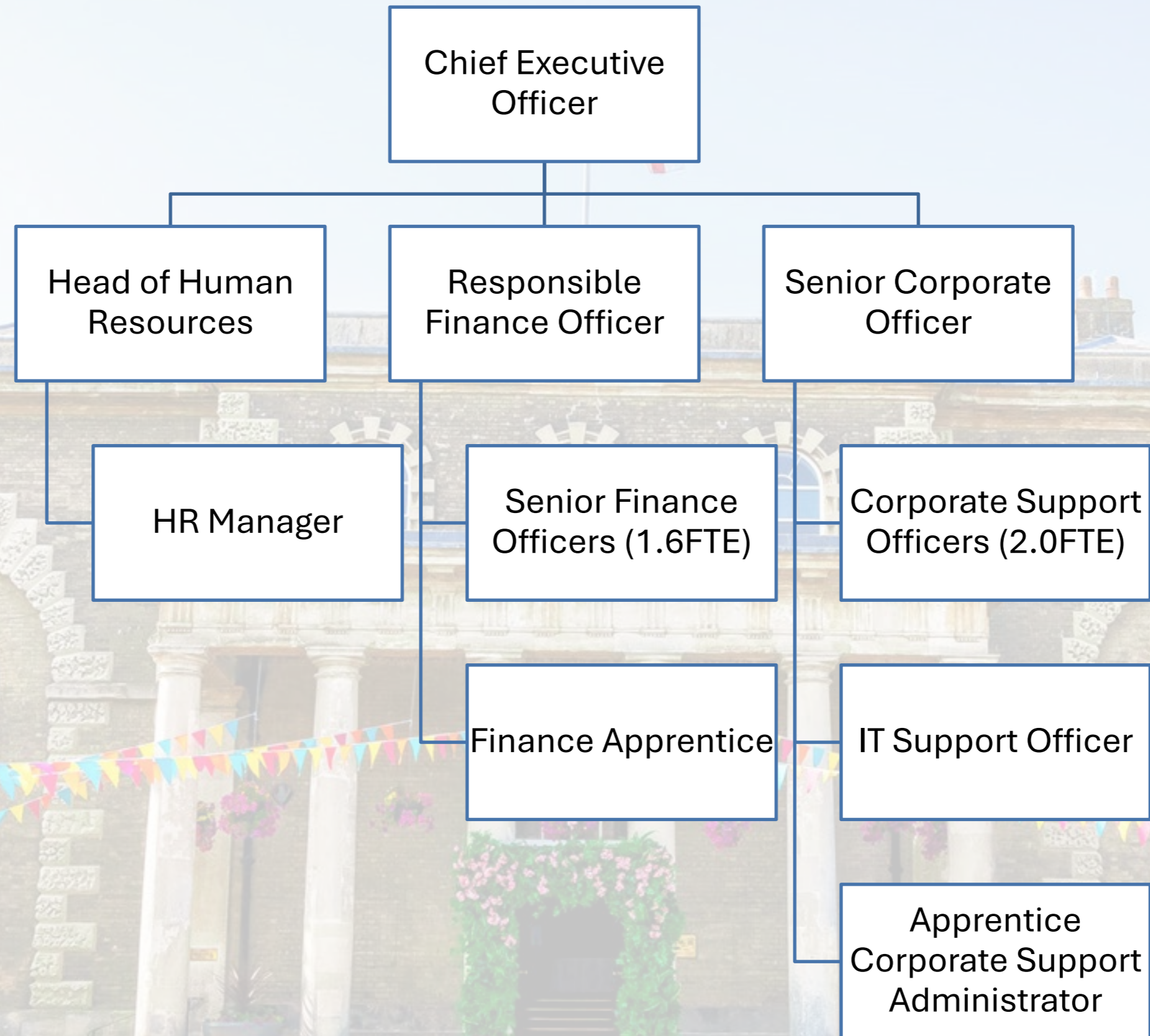
**Janine Whitty**  
Head of Corporate Services  
(Maternity Leave)



**Matthew Hine**  
Head of Business Operations

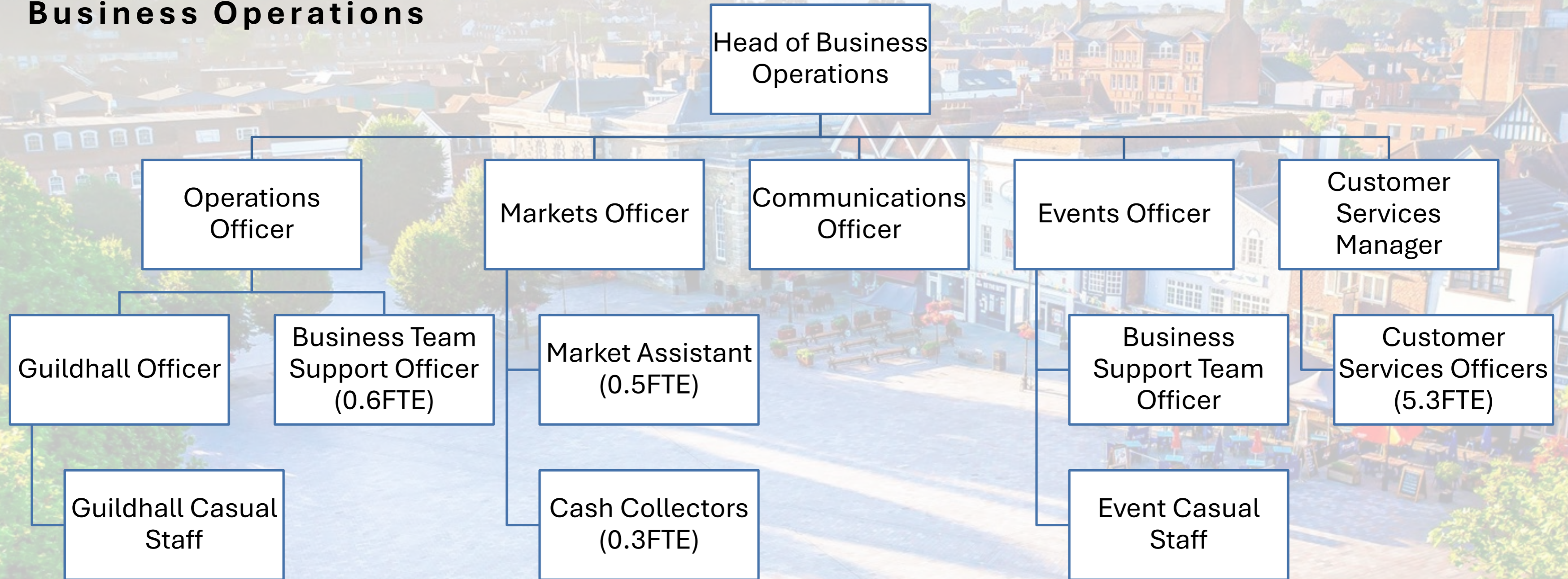


# Chief Executive



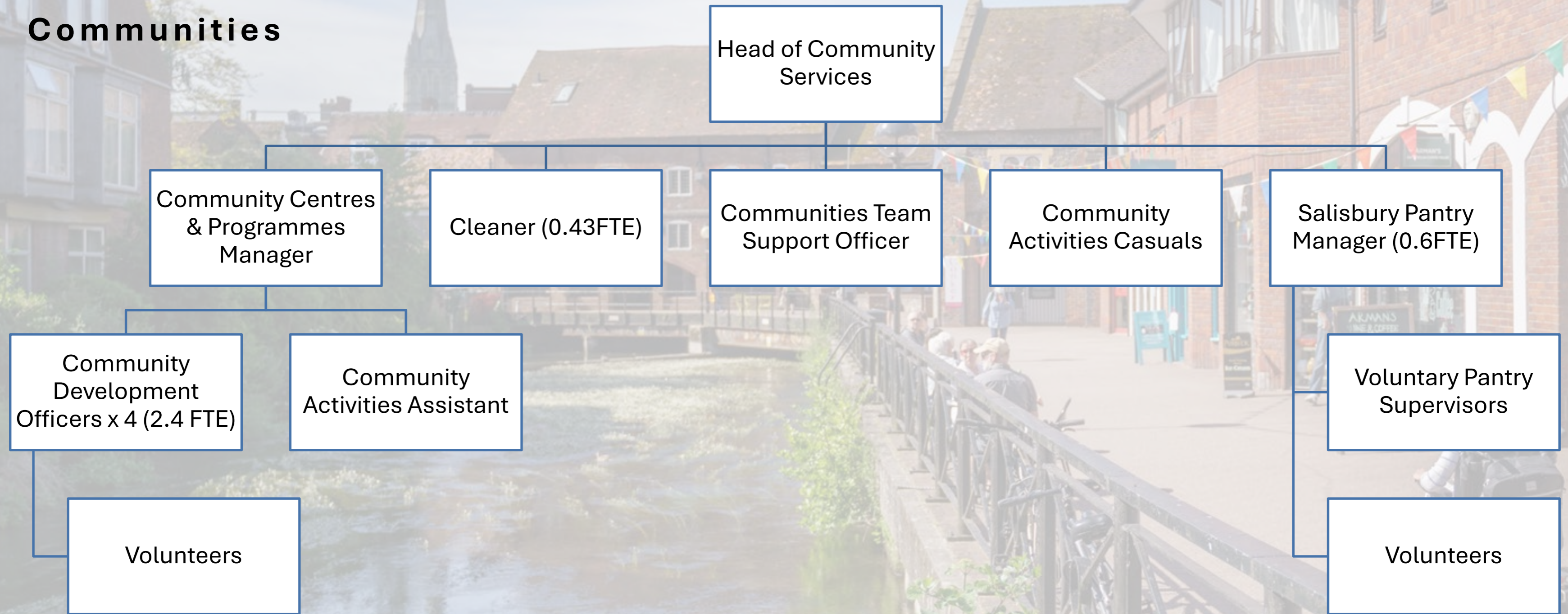


# Business Operations



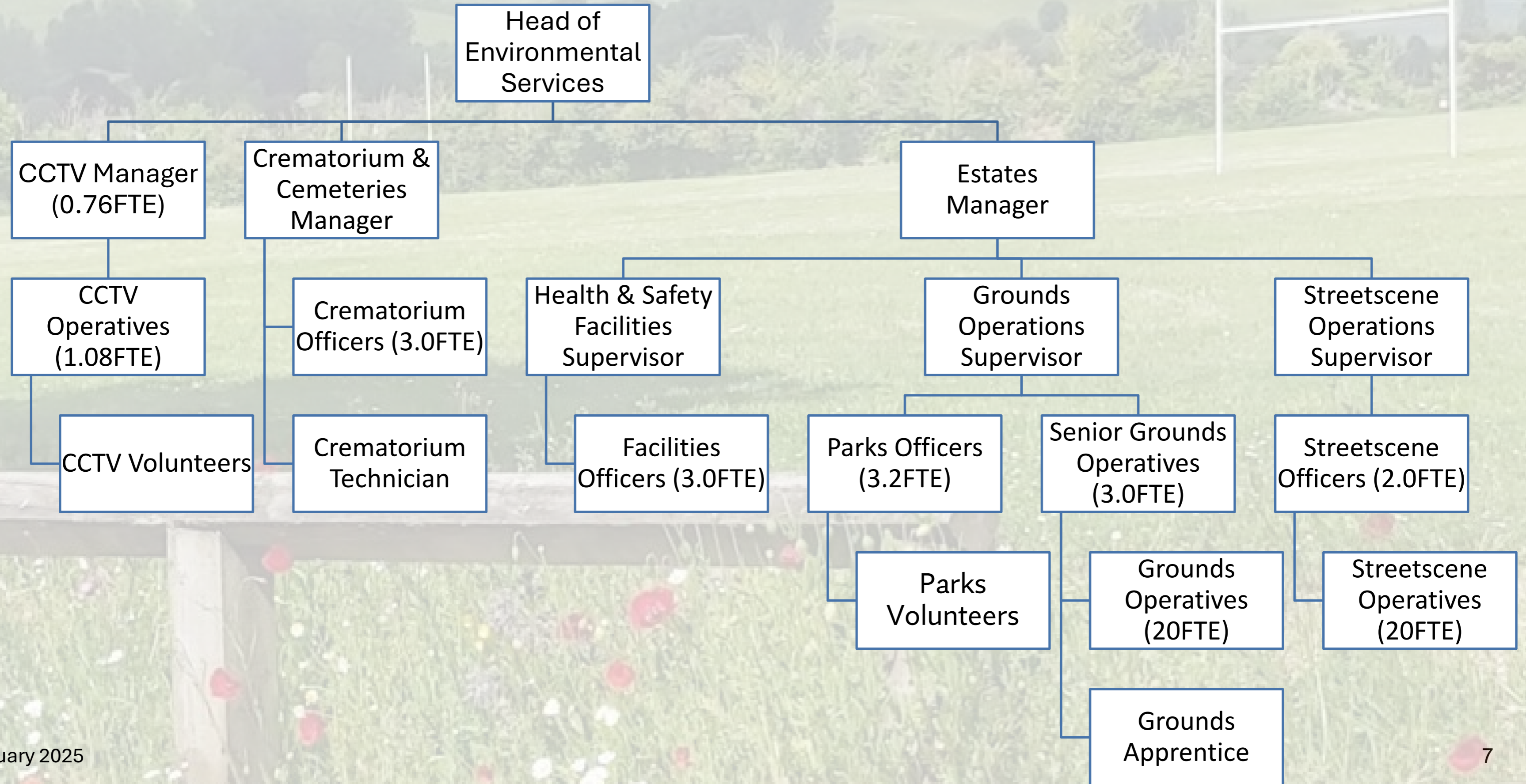


# Communities





# Environmental Services



# Thank you

Human Resources & Payroll  
[HR@salisburycitycouncil.gov.uk](mailto:HR@salisburycitycouncil.gov.uk)