

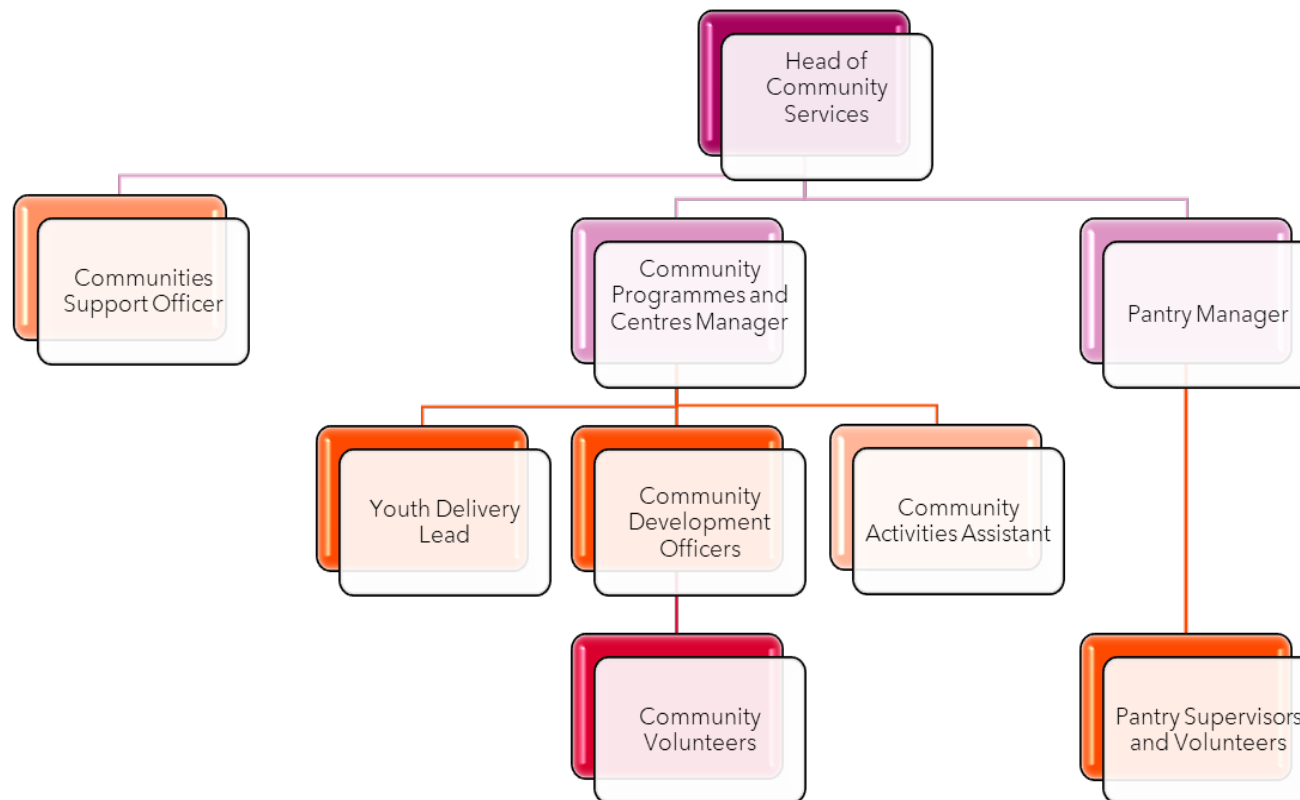
COMMUNITY SERVICES

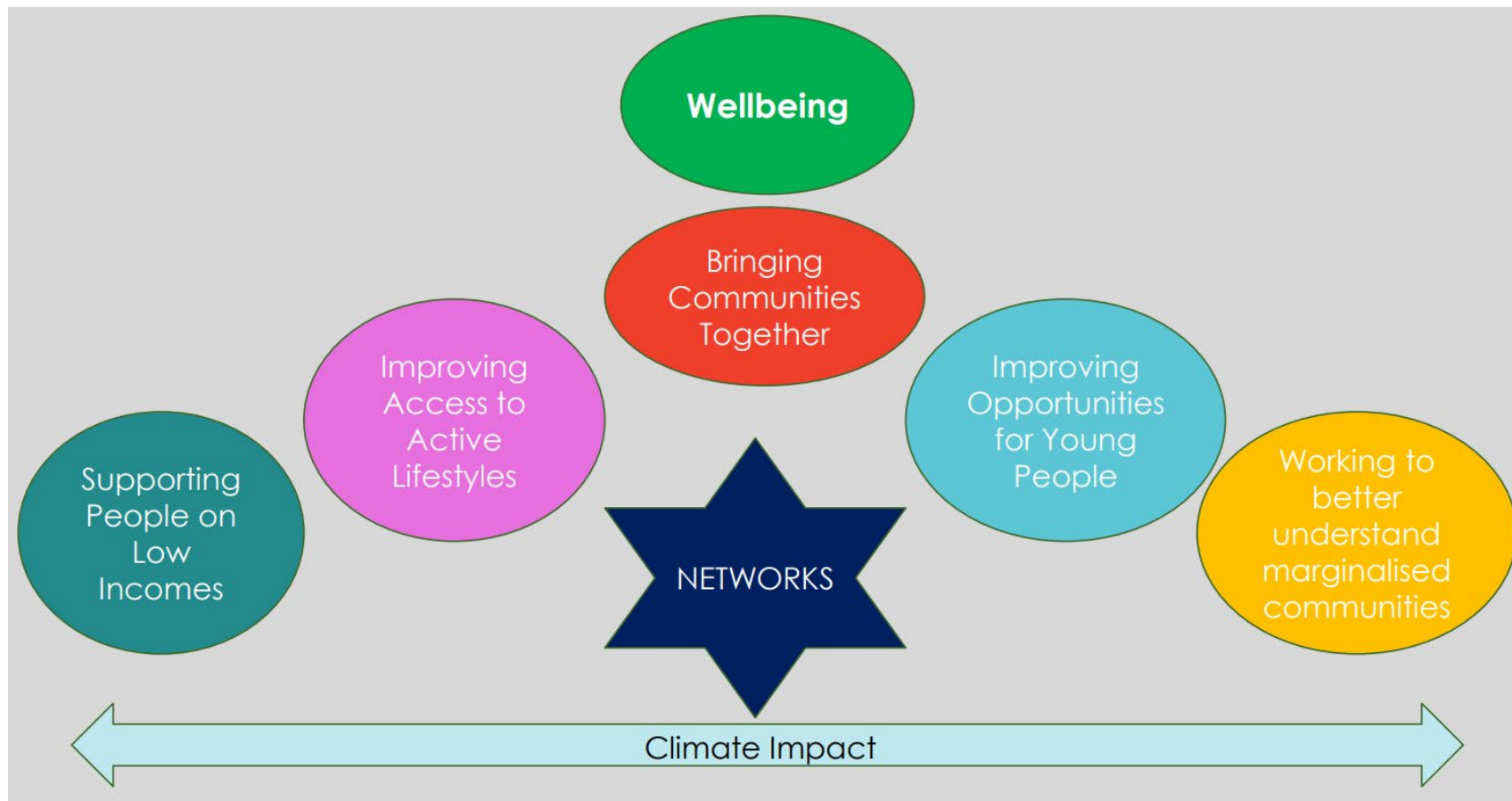
Introduction and Update

Monday 2 June 2025



MEET THE TEAM





COMMUNITY DEVELOPMENT

Our Communities Team work with members of the Salisbury community to design and deliver a range of activities and services, connect people, improve their wellbeing and build a stronger community now and for the future.

COMMUNITY CENTRES

The Bemerton Heath Community Centre

The Friary Centre



COMMUNITY CENTRE UPDATE



Vibrant atmosphere with new and existing clubs thriving



Increased bookings from multiple organisations



Greater diversity and community reach



BEMERTON HEATH COMM UNITY CENTRE - ACTIVITIES

- ‘Merry Memories’ memory group (Thursdays)
- MS Group (monthly), Parish Nurse (2 days/week)
- Lung health & wellbeing support
- Acorn Community Bank (monthly financial support)
- Spire Inclusion uses hall for exercise activities
- Cubs & Scouts (Tues & Wed) – fully booked with waitlist
- Rise 61 twice weekly

BEAUTIFUL BEMERTON PROJECT

Part-funded by Wiltshire Council

Community-led improvements to the neighbourhood

New flower & vegetable garden, benches, accessible paths

'Welcome to Bemerton Heath' signs created by residents

Upcoming: Pump track, pop-up events, Fun Day (July 31st)



COMMUNITY ACTIVITIES

Adults and Older People



Children and Families



Young People



ADULTS AND OLDER PEOPLE - UPDATE

- Senior Social Club
- Grown from 4 to 18-20 members
- Activities: Pool, games, shared lunches
- Welcoming and engaging environment for seniors





SOCIAL AND LUNCH CLUBS

- St Michael's: 2-course hot lunch for 60+ (supported by SCC)
- Brown Street Café: SCC-supported lunches
- Strong social bonds formed through shared meals



CREATIVE ARTS AND CRAFTS

- Kaleidoscope group meets twice weekly; new pottery/glass kiln soon
- Friary hosts a weekly long-running art & craft group
- Collaboration with Wiltshire Creative and Salisbury Museum

CHILDREN & FAMILIES- UPDATE

- Clubs at Friary & Bemerton for ages 6-11
- Child-led planning with termly activities
- Hot meals, healthy snacks, and newsletters



AFTER SCHOOL CLUBS



- Monday Club (Friary): 10-12 attendees, cooking, games, meals
- Wednesday Club (Bemerton): 8-10 attendees, garden access, planting
- Both clubs term-time only, with half-term events & summer trips planned



TODDLER & HALF-TERM GROUPS

Toddler Group (Bemerton):
Relaunching in Sept,
promoted at Fun Day

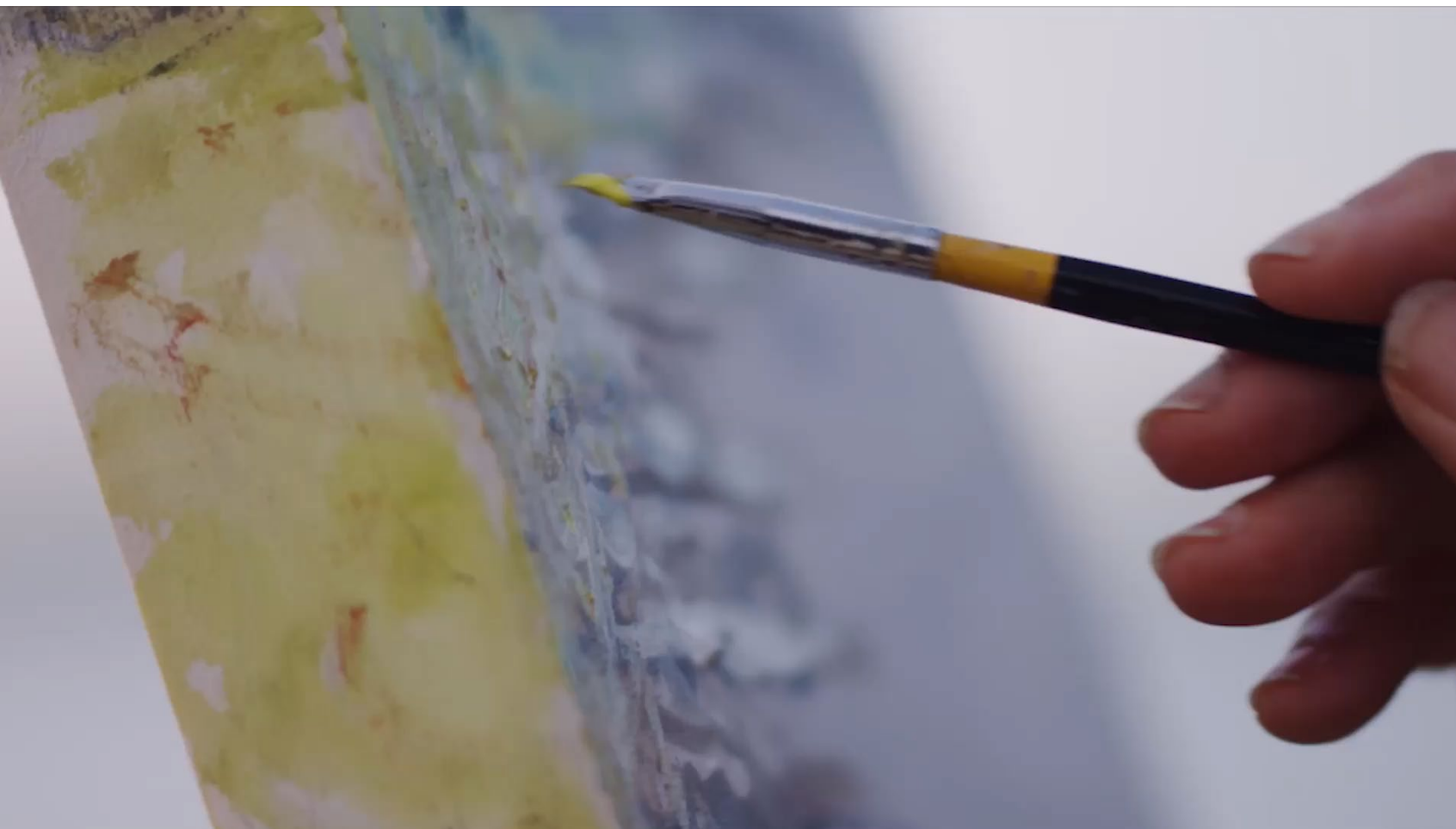
Half-Term Group (Friary):
For toddlers & older
siblings

Includes toys, crafts, and
self-serve snacks

YOUNG PEOPLE- UPDATE

- 'The Hangout' (Tuesdays at Friary): 10-15 youth, hot meals, sports
- District Sports partnership delivers weekly sessions
- Recent trips include local arcade and community games





ART & BISHOPDOWN YOUTH GROUPS

- Museum Art Group
(Thursdays, Friary): ~5
attendees, historical themes
- Current project: fantasy
realm book for Salisbury
Museum
- Bishopdown Group
(Thursdays): ~8 youth,
weekly sports coach,
funded by Parish Council

Attendees:

40 total, with a regular core group of 8; 2 new joiners.

Challenges:

Current space at Rocketship is overcrowded when full (up to 12 attendees); seeking a larger venue to grow.

Collaborations:

Salisbury Museum visit.

Bishop Wordsworth's sixth formers exploring group as model for a school-based LGBT group.

Events:

Represented at *Salisbury Transitions: People in the Park* (17 May).

Over 1,000 attendees; strong community engagement.

Impact:

Group is increasingly recognised and influencing wider youth inclusion initiatives in the city.

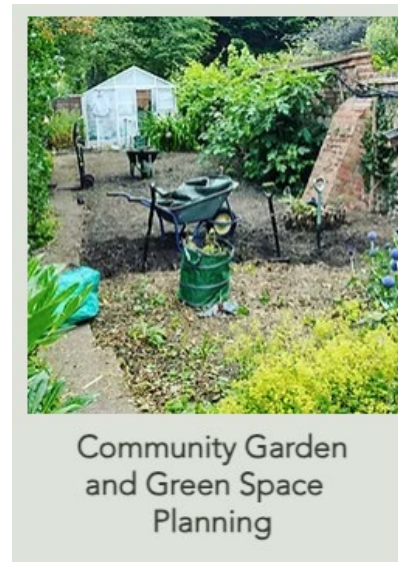
BU LGBT YOUTH GROUP



ACTIVE LIFESTYLES

Delivery Partners include

- Ramblers Wellbeing Walks
- District Sports
- Kidz Love Fit
- Panthera Dance
- Girl in a Shed



Community Garden
and Green Space
Planning

Moving Monsters

Drop in
sessions for
walkers age
1-5 years!

with
**KIDZ
love FIT**

Parent and toddler 'Moving Monsters'
sessions with KidzLoveFit!
An initiative for the children of
Bemerton Heath.

St Michael's community centre every
Monday 2-2.45pm

Bemerton heath centre every
Wednesday 9.30-10.15am

07795026220 | INFO@KIDZLOVEFIT.CO.UK

Limited spaces,
message or
email to book
on!



WELCOME TO YOUR SALISBURY PANTRY

Active members

369

Average number of families being
supported per week

100

Busiest April yet

514 shops



YOUR SALISBURY PANTRY - NEWS



5*
food hygiene rating

4
new volunteers

100
easter eggs donated

WELCOME TO OUR COMMUNITY CAFÉ



Engagements:

- 299 participants (avg. 20/week), 199 meals served, 9 new attendees.

Support Partners (on rotation):

- Acorn Community Bank, Wiltshire Carer Support, DIGS, Wellness & Prevention Team, and in-house volunteer support.

Guest Organisations:

- NHS Cancer Support, Alzheimer's Support, Salisbury Museum, Silver Salisbury.

Events:

- Family craft days for Valentine's, Mother's Day, Easter.

Community Impact:

- Remembered long-term member Fred Reed; his family now attends.
- Strong social bonds fostered, e.g., "The Lads" group—now connected to mental health support through Safer and Supportive Salisbury.

Upcoming:

- Annual Summer Trip to Milestones Living Museum with Senior Social Group.

OUR COMMUNITY CAFÉ - UPDATE)





OTHER ACTIVITIES & EVENTS

- June 11th: Coach trip to Basingstoke (53 attendees)
- 4 City-wide Fun Days (July-August)
- Older members volunteering at events
- Involvement with Silver Salisbury & Vintage Tea Party

Sports Funding

GRANTS AND FUNDING



Community Lottery Good Causes

Rent Reductions



Community Development Grants

LOOKING AHEAD

Strong community momentum

Expanding partnerships and outreach

Exciting networking opportunities on the horizon

