

Highways Improvement Request Form

Issue Details

Location of Issue:	Victoria Road – Opposite the entrance to Victoria Lodge
Community Area:	Salisbury
Parish or Town Council:	Salisbury City Council – St Francis Ward
Nature of Issue:	
<p>Removal of the two residents parking spaces opposite the entrance to Victoria Lodge and replace with double yellow lines</p> <p>This Highways Improvement Request is submitted following discussions with Local Salisbury City and Wiltshire Councillors who have in turn discussed the issue with Wiltshire Council Highways Officers.</p> <p>We understand that the local residents parking scheme was introduced to Victoria Road in approx. 2007. Apparently in an attempt to calm traffic a double parking bay was added onto the sharp bend in Victoria Road opposite the entrance to Victoria Lodge. The parking bays are frequently occupied by small goods vehicles and vans. Parked vehicles in these bays narrow the road and block the view of motorists approaching the bend from both Moberly Road and Castle Road. This area is used extensively in the morning and afternoon to drop off pupils from South Wilts Grammar School, by cyclists and people being dropped off to walk into the city centre via the underpass and pedestrian bridge at the end of Victoria Road. The parked vehicles obscure crossing pedestrians and have the effect of narrowing the pavement which is particularly frustrating for local wheel chair users.</p> <p>Planning Application PL/2025/07792 will allow a 'Change of Use' of Victoria Lodge from Bed and Breakfast to Dental Surgery (Use Class E(e)). Wiltshire Council Highways Officer Claire Covill has raised no objection to this planning application. However the change of use will undoubtedly increase the daily number of traffic movements in and out of the Victoria Lodge gateway. Exiting the car park is made more difficult when vehicles are parked opposite. The increased activity allied to an already very busy junction makes a traffic accident far more likely.</p> <p>We are very concerned that the "change of use" will mean that there will be much more regular traffic coming in and out of Victoria Lodge (although we have no objection in principle to the actual change of use). There are 2 parking bays directly opposite this entrance, and given the existing very bad sightline on that corner, we would ask that these bays be removed.</p> <p>Our concerns are as follows:</p> <ul style="list-style-type: none"> • The traffic is forced into the middle of the road by the cars parked in the bays • The constant use of this corner to pick up and drop off children from SWGS. • The danger from children crossing the road on a blind bend • The use of the corner by people making u-turns, especially delivery drivers. • We can see all of this from our upstairs study window and attach photos to show the problem. <p>Cllr Rideout Comments</p> <p>The two parking bays concerned, appear to be used more than other parking spaces in Victoria and Moberley Road. They force traffic into the middle of the road as it turns off Castle Road heading up Moberley Road, basically making the road, single lane traffic. The traffic along Moberley Road is significant at specific points of the day, primarily during school drop off and pick up times as there are 4 schools in the locality, with lots of parents picking up and dropping off along this route.</p>	

Moreover, the parked cars block the view of pedestrians trying to cross the road at the designated crossing site. This crossing is very well used by people heading into the city or to access the crossing to Victoria Park, and particularly at the start and end of the day by students who attend SWGS, when it is particularly busy.

Victoria Road is part of the National Cycleway, and as such cyclists use this route regularly. Again, their visibility is impacted upon by the cars parked in these two bays and they are forced into sharing the same lane as oncoming cars.

The added movement of traffic when Victoria Lodge is opened as a dental surgery, will be adding to this, and particularly as the entrance to the car park of the building is opposite the parking spaces. The removal of the two car parking spaces will increase the safety of all those using the road, as drivers, pedestrians and cyclists and therefore I wholeheartedly support this application.

How long has it been an issue?

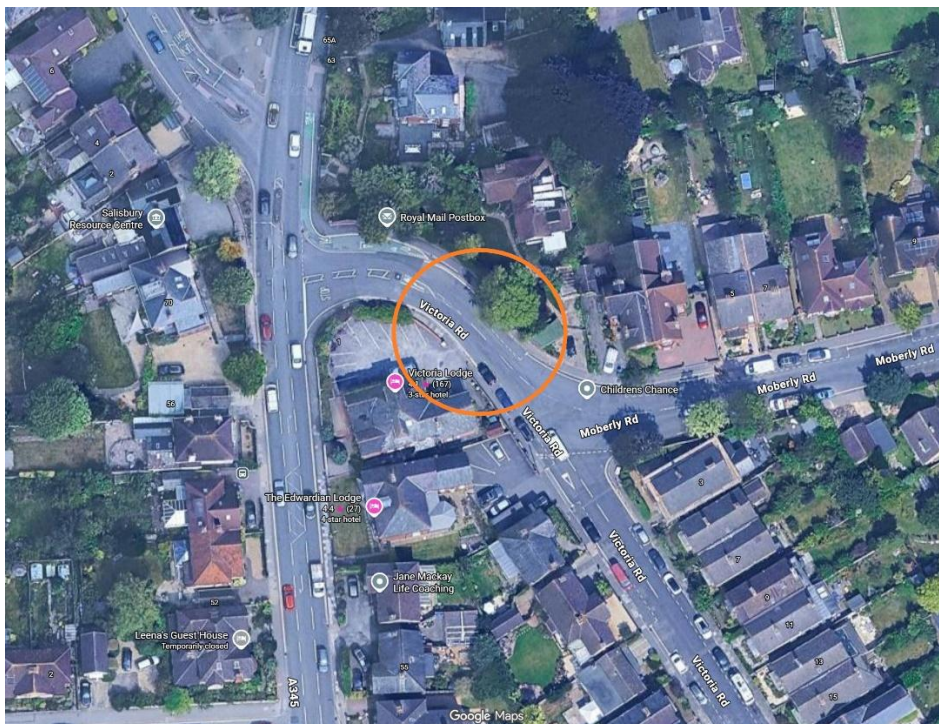
We moved here last year and noticed it immediately. However, the change of use of Victoria Lodge and anticipated increase in traffic now makes this a **more urgent problem of risk** to pedestrians and cyclists the space and visibility.

What would you like done to resolve this issue?

It is requested that the double parking bay opposite the Victoria Lodge entrance is removed and replaced with double yellow lines.

Have you been in touch with your local Wiltshire Councillor?

Yes





Van has to go over central line on blind bend due to parking bays



The effect on traffic on bend due to blind corner



Children crossing to parent's car